

# TM 5-4320-248-25P

DEPARTMENT OF THE ARMY TECHNICAL MANUAL

---

ORGANIZATIONAL, DIRECT AND  
GENERAL SUPPORT, AND DEPOT  
MAINTENANCE REPAIR PARTS AND  
SPECIAL TOOLS LIST

FUEL SYSTEM, TRANSFER, PORTABLE,  
PUMP, CENTRIFUGAL, 100 GPM; TWO  
DISCHARGE HOSE ASSEMBLIES;  
ONE SUCTION HOSE ASSEMBLY;  
TWO NON-AUTOMATIC NOZZLE  
ASSEMBLIES; ONE MONITOR GO-NO-GO  
GAGE, 100 GPM; 3 HP GASOLINE ENGINE;  
ONE BASKET ASSEMBLY KENCO  
MODEL 114MX1A FSN 4320-900-8544

---

HEADQUARTERS, DEPARTMENT OF THE ARMY

FEBRUARY 1968



**Organizational, Direct And General Support, And Depot  
Maintenance**

**Repair Parts And Special Tools List**

**FUEL SYSTEM, TRANSFER, PORTABLE, PUMP, CENTRIFUGAL,  
100 GPM; TWO DISCHARGE HOSE ASSEMBLIES; ONE SUCTION  
HOSE ASSEMBLY; TWO NON-AUTOMATIC NOZZLE ASSEM-  
BLIES; ONE MONITOR GO-NO-GO GAGE, 100 GPM; 3 HP  
GASOLINE ENGINE; ONE BASKET ASSEMBLY KENCO MODEL  
114MX1A  
FSN 4320-900-8544**

**CURRENT AS OF NOVEMBER 1967**

	Paragraph	Page
SECTION I. INTRODUCTION		
Scope -----	1	iii
General - - - - -	2	iii
Explanation of columns-- - - - -	3	iii
Special information-- - - - -	4	vi
How to locate repair parts -- - - - -	5	vi
Abbreviations -----	6	vi
Federal supply codes for manufactures-----	7	vi
Recommendations for maintenance manual improvements -----	8	vi
II. PRESCRIBED LOAD ALLOWANCE - - - - -		vii
III. SPECIAL TOOLS, TEST AND SUPPORT EQUIPMENT FOR ORGANIZATIONAL MAINTENANCE (NOT APPLICABLE)		
SECTION IV. REPAIR PARTS FOR ORGANIZATIONAL MAINTENANCE		
Group 01. Engine		
0100 Engine assembly -----	1	1
0106 Engine lubrication system -----	1	1
0107 Engine starting system -----	2	2
03. Fuel System		
0 3 0 1 C a r b u r e t o r -----	3	3
0304 Air cleaner -----	3	3
0306 Tanks, lines, and fittings-----	4	4
0308 Engine speed governor-----	4	4
04. Exhaust System		
0 4 0 1 M u f f l e r a n d p i p e s -----	5	5
05. Cooling System		
0 5 0 2 S h r o u d s -----	5	5
06. Electrical System		
0605 Ignition components -----	6	6

	Page
Group 15. Frame	
1501 Frame assembly -----	8
22. Body Chassis or Hull and Accessory Items	
2202 Accessory items -----	9
2210 Data plates and instruction holders -----	10
72. Dispensing and Servicing Equipment Components	
7202 Pumps and meters -----	11
7203 Valves, fittings, nozzles -----	12
7204 Miscellaneous parts and accessories -----	13
 SECTION V. REPAIR PARTS FOR DS, GS, AND DEPOT MAINTENANCE	
Group 01. Engine	
0100 Engine assembly -----	16
0101 Crankcase, block, cylinder head -----	17
0102 Crankshaft -----	18
0104 Pistons, connecting rods -----	18
0105 Valves, camshafts and timing system -----	18
0106 Engine lubrication system -----	19
0107 Engine starting system -----	20
03. Fuel System	
0301 Carburetor -----	21
0304 Air cleaner -----	23
0306 Tanks, lines, and fittings -----	23
0308 Engine speed governor -----	24
04. Exhaust System	
0401 Muffler and pipes -----	26
05. Cooling System	
0502 Shrouds -----	26
06. Electrical System	
0605 Ignition components -----	27
15. Frame	
1501 Frame assembly -----	28
22. Body Chassis or Hull, and Accessory Items	
2202 Accessory items -----	29
2210 Data plates and instruction holders -----	31
72. Dispensing and Servicing Equipment Components	
7202 Pumps and meters -----	31
7203 Valves, fittings, nozzles -----	33
7204 Miscellaneous parts and accessories -----	35
 SECTION VI. SPECIAL TOOLS, TEST AND SUPPORT EQUIPMENT FOR DS, GS, AND DEPOT MAINTENANCE (NOT APPLICABLE)	
VII. INDEX-FEDERAL STOCK NUMBER AND REFERENCE NUMBER, CROSS-REFERENCE TO INDEX NUMBER -----	52

**SECTION I.**  
**INTRODUCTION**

**1. Scope**

This manual lists repair parts required for the performance of organizational, direct support, general support, and depot maintenance of the pump.

**2. General**

a. The repair parts list is arranged as follows:

- (1) Individual parts and major assemblies are listed alphabetically by item name within the numbered functional groups.
- (2) Assembly components and subassemblies are intended and listed alphabetically by item name under major assemblies.

b. This Repair Parts and Special Tools List is divided into the following sections.

- (1) *Prescribed Load Allowance (PLA)-Section II.* A consolidated listing of repair parts quantitatively allocated for initial stockage at the organizational level. *This is a mandatory minimum stockage allowance.*
- (2) *Special Tools, Test and Support Equipment-Section III.* A list of special tools test and support equipment authorized for the performance of maintenance at the organizational level. (NOT APPLICABLE)
- (3) *Repair Parts-Section IV.* A list of repair parts authorized for the performance of maintenance at the organizational level.
- (4) *Repair Parts-Section V.* A list of repair parts authorized for the performance of maintenance at the direct

support, general support, and depot level.

- (5) *Special Tools, Test and Support Equipment—Section VI.* A list of special tools, test and support equipment authorized for the performance of maintenance at the direct support, general support, and depot level. (NOT APPLICABLE)
- (6) *Federal Stock Number and Reference Number Index—Section VII.* A list of Federal stock numbers followed by reference numbers, appearing in all the listings, in ascending alphanumeric sequence cross-referenced to index number.

**3. Explanation of Columns**

The following provides an explanation of columns in the tabular lists in Sections II through VI.

a. *Source, Maintenance, and Recoverability Codes (SMR).*

- (1) *Source Code.* Indicates the selection status and source for the listed item. Source codes used are:

Code	Explanation
P	Applied to repair parts which are stocked in or supplied from DSA/GSA or Army supply system, and authorized for use at indicated maintenance categories.
M	Applied to repair parts which are not procured or stocked but are to be manufactured at indicated maintenance categories.
A	Applied to assemblies which are not procured or stocked as such but made up of two or more units, each of which carry individual stock numbers and descriptions and are procured and stocked and can be assembled by units at indicated maintenance categories

Code	Explanation
X	Applied to parts and assemblies which are not procured or stocked, the mortality of which is normally below that of the applicable end item, and the failure of which should result in retirement of the end item from the supply system.
X1	Applied to repair parts which are not procured or stocked, the requirement for which will be supplied by use of the next higher assembly or components.
X2	Applied to repair parts which are not stocked. The indicated maintenance category requiring such repair parts will attempt to obtain them through cannibalization; if not obtainable through cannibalization, such repair parts will be requisitioned with supporting justification through normal supply channels.
C	Applied to repair parts authorized for local procurements. If not obtainable from local procurement, such repair parts will be requisitioned through normal supply channels with a supporting statement of nonavailability from local procurement.
G	Applied to major assemblies that are procured with PEMA (Procurement Equipment Missile Army) funds for initial issue to be used as exchange assemblies at DSU and GSU maintenance level. These assemblies will not be stocked above DSU and GSU level or returned to depot supply level.
	<i>Note.</i> Source code and level of maintenance are not shown on common hardware items known to be readily available in Army supply channel and through local procurement.
	(2) <i>Maintenance Code.</i> Indicates the lowest category of maintenance authorized to install the listed item. The maintenance level codes are:

Code	Explanation
O	Organizational maintenance
F	Direct support maintenance
H	General support maintenance
D	Depot maintenance

(3) *Recoverability Code.* Indicates whether unserviceable items should be returned for recovery or salvage. Items not coded are expendable. Recoverability codes are:

Code	Explanation
R	Applied to repair parts and assemblies which are economically repairable at DSU and GSU activities and normally are furnished by supply on an exchange basis.
T	Applied to high dollar value recoverable repair parts which are subject to special handling and are issued on an exchange basis. Such repair parts normally are repaired or overhauled at depot maintenance activities.
u	Applied to repair parts specifically selected for salvage by reclamation unit because of precious metal content, critical materials, high dollar value reusable casings or castings.
	(4) This column also lists, below the SMR code, an index number for each item in ascending numerical sequence, which is used to locate items in the publication when the Federal stock number and/or reference number is known.
	<i>b. Federal Stock Number.</i> Indicates the Federal stock number for the item.
	<i>c. Description.</i> Indicates the Federal item name and any additional description of the item required. A part number or other reference number is followed by the applicable five-digit Federal supply code for manufacturers in parentheses.
	<i>d. Unit of Issue.</i> Indicates the unit used as a basis for issue, e.g. ea, pr, ft, yd, etc.
	<i>h. Quantity Incorporated in Unit Pack.</i> Indicates the actual quantity contained in the unit pack.
	<i>f. Quantity Incorporated in Unit.</i> Indicates the quantity of the item used in the functional group.
	<i>g. Fifteen-Day Organizational Maintenance Allowances.</i>
	(1) The allowance columns are divided into four subcolumns. Indicated in each subcolumn opposite the first appearance of each item is the total quantity of items authorized for the number of equipments supported. Subsequent appearances of the same item will have no entry in the allowance columns but will have in the description column a reference to the first appearance of the item. Items authorized

for use as required but not for initial stockage are identified with an-asterisk in the allowance column,

- (2) The quantitative allowances for organizational level of maintenance represents one initial prescribed load for a 15-day period for the number of equipments supported. Units and organizations authorized additional prescribed loads will multiply the number of prescribed loads authorized by the quantity of repair parts reflected in the appropriate density column to obtain the total quantity of repair parts authorized.
- (3) Organizational units providing maintenance for more than 100 of these equipments shall determine the total quantity of parts required by converting the equipment quantity to a decimal factor by placing a decimal point before the next to last digit of the number to indicate hundredths, and multiplying the decimal factor by the parts quantity authorized in the 51-100 allowance column. Example, authorized allowance for 51-100 equipments is 12; for 140 equipments multiply 12 by 1.40 or 16.80 rounded off to 17 parts required.
- (4) Subsequent changes to allowances will be limited as follows: No change in the range of items is authorized. If additional items are considered necessary, recommendation should be forwarded to U.S. Army Mobility Equipment Command for exception or revision to the allowance list. Revisions to the range of items authorized will be made by this Command based upon engineering experience, demand data, or TAERS information.

*h. Thirty-Day DS/GS Allowances.*

- (1) The allowance columns are divided into three subcolumns. Indicated in each subcolumn, opposite the first appearance of each item, is the total quantity of items authorized for the number of equipments supported. Subsequent appearance of the same item will have no entry in the allow-

ance column, but will have in the description column a reference to the first appearance of the item. Items authorized for use as required but not for initial stockage are identified with an asterisk in the allowance column.

- (2) The quantitative allowances for DS/GS levels of maintenance will represent initial stockage for a 30-day period for the number of equipments supported.
- (3) Determination of the total quantity of parts required for maintenance of more than 100 of these equipments can be accomplished by converting the equipment quantity to a decimal factor by placing a decimal point before the next to last digit of the number to indicate hundredths, and multiplying the decimal factor by the parts quantity authorized in the 51-100 allowance column. Example, authorized allowance for 51-100 equipments is 40; for 150 equipments multiply 40 by 1.50 or 60 parts required.

*i. One-Year Allowances Per 100 Equipments/Contingency Planning Purposes.* Indicates opposite the first appearance of each item the total quantity required for distribution and contingency planning purposes. The range of items indicates total quantities of all authorized items required to provide for adequate support of 100 equipments for one year.

*j. Depot Maintenance Allowance Per 100 Equipments.* Indicates opposite the first appearance of each item the total quantity authorized for depot maintenance of 100 equipments. Subsequent appearances of the same item will have no entry in this column, but will have in the description column a reference to the first appearance of the item. Items authorized for use but not for initial stockage are identified with an asterisk in the allowance column.

*k. Illustration.*

- (1) *Figure Number.* Indicates the figure number of the illustration in which the item is shown.
- (2) *Item Number.* Indicates the callout number to reference the item in the illustration.

**4. Special Information**

- a. Repair parts mortality has been based on 1000 hours of operation per year.
- b. Parts which require manufacture or assembly at a category higher than that authorized for installation will indicate in the source column the higher category.
- c. The following publication pertains to the pump and its components:

TM 5-4320-248-Operator, organizational,  
15 direct support, general support, and depot maintenance manual.

**5. How to Locate Repair Parts**

- a. When Federal stock number or reference number is unknown:
  - (1) *First.* Using the table of contents, determine the functional group within which the repair part belongs.
  - (2) *Second.* Find the illustration covering the functional group to which the repair part belongs,
  - (3) *Third.* Identify the repair part on the illustration, and note the illustration figure and item number of the repair part.
  - (4) *Fourth.* Using the Repair Parts Listing, find the functional group to which the repair part belongs and locate the illustration figure and item number noted on the illustration.
- b. When Federal stock number or reference number is known:
  - (1) *First.* Using the index of Federal stock numbers and reference numbers, find the pertinent Federal Stock number or reference number, This in-

dex is in ascending alphanumeric sequence cross-referenced to an index number.

- (2) *Second.* Using the repair part listing, find the index number referenced in the index of Federal stock numbers and reference numbers,

**6. Abbreviations**

GPM -----Gallons Per Minute  
 hp -----horse power  
 in. -----inch, inches  
 lg -----long, length  
 mtg-----mounting  
 std-----standard  
 thd -----thread  
 w/ -----with

**7. Federal Supply Codes for Manufacturers**

Code	Manufacturers
08484 ---	Breeze Corporation Inc.
08645 ---	Briggs and Stratton Corp.
25500 ---	Goodyear Aircraft Corp.
38508 ---	Marsh Instrument Co., Division of Colorado Oil and Gas Corp.
81718 ---	OPW Division of Dover Corp.
88795 ---	Kenco Pump Division of American Crucible Products Co.
90005 ---	Bendix Corp., The Filter Division
98906 ---	Military Stantdards

**8. Recommendations for Maintenance Manual Improvements**

Report of errors, omissions, and recommendations for improving this publication by the individual user is encouraged. Reports should be submitted on DA Form 2028 (Recommended Changes to DA Publications) and forwarded direct to the Commanding General, U. S. Army Mobility Equipment Command, ATTN: AMSME-MPP, 4300 Goodfellow Blvd., St. Louis, Mo. 63120,



**SECTION II**  
**PRESCRIBED LOAD ALLOWANCE**

(1) Federal stock number	(2) Description  useable on code	(3) Qty inc in unit pack	(4) day org maint. alw			
			(a) 1-5	(b) 6-20	(c) 21-50	(d) 51-100
	Group 01-ENGINE 0100-ENGINE ASSEMBLY					
2805-828-0783	GASKET SET: engine (08645) 297275		*	*	2	2
	Group 0106-ENGINE LUBRICATION SYSTEM					
2805-776-2282	GROMMET : breather cover (08645) 66578		*	*	2	2
	Group 0107-ENGINE STARTING SYSTEM					
2990-174-5255	ROPE, ENGINE STARTER: 47 1/8 in. lg. (08645) 294584		2	2	4	8
	Group 03-FUEL SYSTEM 0301-CARBURETOR					
2910-920-5361	CARBURETOR ASSEMBLY (08645) 296784		*	*	2	2
	0304-AIR CLEANER					
2940-688-7912	FILTER ELEMENT, AIR INTAKE (08645) 27987		*	*	*	2
	0308-ENGINE SPEED GOVERNOR					
2990-624-0260	SPRING, CONTROL ROD (08645) 26855		*	*	*	2
2990-898-2097	SPRING, GOVERNOR LINK (08645) 260585		*	*	*	2
3340-945-0493	SPRING, GOVERNOR LEVER (08645) 260545		*	*	*	2
	Group 06-ELECTRICAL SYSTEM 0605-IGNITION COMPONENTS					
2805-624-0284	PARTS KIT, IGNITION: breaker points and condenser ( 08645 ) 294628		*	2	2	4
2920-294-3747	PLUG, SPARK W/GASKET (08645) CJ8		2	2	4	8
3970-789-1925	INSULATOR, PLATE: terminal; condenser lead (08645) 66935		*	*	2	2
	Group 22-CHASSIS OR HULL, AND ACCESSORY ITEMS 2202-ACCESSORY ITEMS					
1720-916-1883	HOSE ASSEMBLY, DISCHARGE : rubber w/coupling (88795) SX937		*	*	*	2
1730-360-0595	GASKET (81718) H6430M		*	2	2	2
	Group 72-DISPENSING AND SERVICING EQUIPMENT COMPONENTS 7204-MISCELLANEOUS PARTS AND ACCESSORIES					
1320-920-5342	CLAMP, HOSE (88795) QS200M28A		*	*	*	2
1930-872-1779	ELEMENT, FILTER (90005) 041420S		2	2	4	8
5330-526-7517	O-RING, 100 GPM GAGE (96906) MS29513-249		*	2	2	4



(1) SMR CODE  INDEX NO.	(2) FEDERAL STOCK NUMBER	(3) DESCRIPTION  REFERENCE NO. & MFR. CODE  USABLE ON CODE		(4) UNIT OF ISSUE	(5) QTY INC IN UNIT PACK	(6) QTY INC IN UNIT	(7) 15-DAY ORGANIZATIONAL MAINTENANCE ALW				(8) ILLUS- TRATION	
							(a)	(b)	(c)	(d)	(a)	(b)
							1-5	6-20	21-50	51-100	FIG NO.	ITEM NO.
00001		SECTION IV - REPAIR PARTS FOR ORGANIZATIONAL MAINTENANCE										
00001A		GROUP 01 - ENGINE										
00001B		0100 - ENGINE ASSEMBLY										
P 0 00004	2805-828-0783	GASKET SET: ENGINE 297275 (08645)		EA		1	*	*	2	2		
X1 00005	2940-608-8514	GASKET: AIR CLEANER 27660 (08645)		EA		1	SEE	GRP 0304				
X1 00006	2940-171-7935	GASKET: CARBURETOR M/G 27402 (08645)		EA		1	SEE	GRP 0301				
X1 00009	2910-898-2094	GASKET: FUEL TANK MTG 27911 (08645)		EA		1	SEE	GRP 0306				
00049		0106 - ENGINE LUBRICATION SYSTEM										
O 00050	5306-073-8255	BOLT, ASSEMBLED WASHER: BREATHER MTG 93394 (08645)		EA		2					5	8
P O 00051	2805-624-0282	BREATHER, VALVE CHAMBER 294178 (08645)		EA		1	*	*	*	*	5	4
P O 00052	2805-422-5804	CAP, OIL FILLER: CRANKCASE COVER 69345 (08645)		EA		1	*	*	*	*	2	11
X1 00053	2805-678-4431	GASKET: VALVE CHAMBER COVER MTG 27549 (08645) (COMPONENT OF GASKET SET, Stock No. 2805-828-0783, GROUP 0100)		EA		1					5	3
P O 00054	2805-776-2282	GROMMET: BREATHER COVER 66578 (08645)		EA		1	*	*	2	2	5	5
X20 00055		GROMMET, BREATHER TUBE 67608 (08645)		EA		1					5	7

(1) SMR CODE INDEX NO.	(2) FEDERAL STOCK NUMBER	(3) DESCRIPTION  REFERENCE NO. & MFR. CODE  USABLE ON CODE	(4) UNIT OF ISSUE	(5) QTY INC IN UNIT PACK	(6) QTY INC IN UNIT	(7) 15-DAY ORGANIZATIONAL MAINTENANCE ALW				(8) ILLUS- TRATION	
						(a)	(b)	(c)	(d)	(a)	(b)
						1-5	6-20	21-50	51-100	FIG NO.	ITEM NO.
O 00056	4730-192-9481	NIPPLE, PIPE; OIL FILLER, 3/4 IN, 2 IN LG 91258 (08645)	EA		1					2	12
P O 00057	2805-849-3141	TUBE, BREATHER 230634 (08645)	EA		1	*	*	*	*	5	6
00058		0107 - ENGINE STARTING SYSTEM									
P O 00059	2990-907-0644	CLUTCH ASSEMBLY STARTER 298310 (08645)	EA		1	*	*	*	*		
X1 00060	3110-100-6180	BEARING, BALL; CLUTCH HOUSING 63770 (08645)	EA		6					4	16
X1 00061	5840-787-6662	BUMPER, STARTER PULLEY 66528 (08645)	EA		1					4	10
X1 00062	2990-768-0723	GRIP, ENGINE STARTER 66728 (08645)	EA		1					4	5
X20 00063		HOUSING, STARTER CLUTCH 211383 (08645)	EA		1					4	17
X1 00064	5315-855-4336	PIN, STARTER GRIP 230228 (08645)	EA		1					4	6
X1 00065	2990-786-2030	PULLEY, ENGINE STARTER 294088 (08645)	EA		1					4	9
P O 00066	2990-930-1737	RATCHET, REWIND 298436 (08645)	EA		1	*	*	*	*	4	15
P O 00067	2990-174-5255	ROPE, ENGINE STARTER: 47 1/8 IN LG 294584 (08645)	EA		1	2	2	4	8	4	2
X20 00068	2990-930-1738	SCREEN, REWIND STARTER PULL 221661 (08645)	EA		1					4	12
O 00069	5305-719-4603	SCREW, ASSEMBLED WASHER; SCREEN MFG 93042 (08645)	EA		4					4	11

(1) SMR CODE	(2) FEDERAL STOCK NUMBER	(3) DESCRIPTION	(4) UNIT OF ISSUE	(5) QTY INC IN UNIT PACK	(6) QTY INC IN UNIT	(7) 15-DAY ORGANIZATIONAL MAINTENANCE ALW				(8) ILLUS- TRATION		
						(a)	(b)	(c)	(d)	(a)	(b)	
						1-5	6-20	21-50	51-100	FIG NO.	ITEM NO.	
		REFERENCE NO. & MFR. CODE										
P 0 00070	2990-769-4104	SPRING, REWIND STARTER 294303 (08645)	EA			*	*	*	*	4	3	
X20 00071		WASHER, CLUTCH RETAINER 221653 (08645)	EA							4	14	
X20 00072		WASHER, RUBBER, RATCHET SEALING 68238 (08645)	EA							4	13	
00073		GROUP 03 - FUEL SYSTEM										
000734		0301 - CARBURETOR										
P 0 00074	2910-920-5361	CARBURETOR ASSEMBLY 296784 (08645)	EA		1	*	*	2	2	6	7	
X1 00094	2940-171-7935	GASKET: CARBURETOR MTG 27402 (08645) (COMPONENT OF GASKET SET, Stock No. 2805-828-0783, SEE GROUP 0100)	EA		1					6	6	
X20 00095		SCREW, ASSEMBLED WASHER: CARBURETOR TO FUEL TANK MTG, 10-32 THD SIZE, 5/8 IN LG 93341 (08645)	EA		3					6	12	
X20 00097		SCREW, CAP, HEXAGON HEAD: CARBURETOR TO ENGINE MTG 1/4-20 THD SIZE, 3/4 IN LG 93357 (08645)	EA		2					6	5	
00100		0304 - AIR CLEANER										
P 0 00101	2940-294-1599	AIR CLEANER, INTAKE 294870 (08645)	EA		1	*	*	*	*	6	2	
P 0 00102	2940-688-7912	FILTER ELEMENT, AIR INTAKE 27987 (08645)	EA		1	*	*	*	2	6	3	
X1 00103	2940-608-8514	GASKET: AIR CLEANER (COMPONENT OF GASKET SET Stock No. 2805-828-0783, SEE GROUP 0100) 27660 (08645)	EA		1					6	4	
X20 00104		SCREW, AIR CLEANER 93322 (08645)	EA		1					6	1	

(1) SMR CODE INDEX NO.	(2) FEDERAL STOCK NUMBER	(3) DESCRIPTION  REFERENCE NO. & MFR. CODE	(4) UNIT OF ISSUE	(5) QTY INC IN UNIT PACK	(6) QTY INC IN UNIT	(7) 15-DAY ORGANIZATIONAL MAINTENANCE ALW				(8) ILLUS- TRATION	
						(a)	(b)	(c)	(d)	(a)	(b)
						1-5	6-20	21-50	51-100	FIG NO	ITEM NO.
CO105		0306 - TANKS, LINES, AND FITTINGS									
X20 00106		TANK, FUEL 296591 (08645)	EA		1					6	9
P 0 00107	2910-707-7503	CAP, FUEL TANK 293270 (08645)	EA		1	*	*	*	*	6	11
X1 00108	2910-898-2094	GASKET: FUEL TANK MTG 27911 (08645) (COMPONENT OF GASKET SET Stock No. 2805-828-0783, SEE GROUP 0100)	EA		1					6	8
X20 00109		SCREW, CAP, HEXAGON HEAD: TANK MTG, 1/4-20 THD SIZE 93343 (08645)	EA		1					6	10
00110		0308 - ENGINE SPEED GOVERNOR									
X20 00117		BUSHING: GOVERNOR LEVER 23688 (08645)	EA		1					8	10
X20 00115		BRACKET: CONTROL ROD MTG 221384 (08645)	EA		1					8	5
X20 00116	2990-787-6665	BRACKET, MECHANICAL GOVERNOR: THROTTLE CONTROL 220691 (08645)	EA		1					8	12
X20 00119		LEVER, GOVERNOR 294077 (08645)	EA		1					8	16
X20 00120		LEVER, MECHANICAL GOVERNOR 220690 (08645)	EA		1					8	7
X20 00121	2990-920-5347	LINK, GOVERNOR 260544 (08645)	EA		1					8	14
X20 00122		NUT, CONTROL ROD 230149 (08645)	EA		1					8	3
X20 00125		ROD, CONTROL: GOVERNOR 230680 (08645)	EA		1					8	6

(1) SMR CODE INDEX NO.	(2) FEDERAL STOCK NUMBER	(3) DESCRIPTION  REFERENCE NO. & MFR. CODE  USABLE ON CODE		(4) UNIT OF ISSUE	(5) QTY INC IN UNIT PACK	(6) QTY INC IN UNIT	(7) 15-DAY ORGANIZATIONAL MAINTENANCE ALW				(8) ILLUS- TRATION	
							(a)	(b)	(c)	(d)	(a)	(b)
							1-5	6-20	21-50	51-100	FIG NO.	ITEM NO.
X20 00126		SCREW, ASSEMBLED WASHER: BRACKET MTG, 10-24 THD SIZE, 9/16 IN LG 93062 (08645)		EA		1					8	11
0 00128	5306-543-5219	SCREW, ASSEMBLED WASHER: THROTTLE LEVER MTG, 10-24 THD SIZE, 3/8 IN LG 93067 (08645)		EA		1					8	9
0 00129	5305-719-4783	SCREW, MACHINE: LEVER MTG 93100 (08645)		EA		1					8	17
P 0 00131	2990-624-0260	SPRING, CONTROL ROD 26855 (08645)		EA		1	*	*	*	2	8	4
P 0 00132	5340-945-0493	SPRING, GOVERNOR LEVER 260545 (08645)		EA		1	*	*	*	2	8	15
P 0 00133	2990-898-2097	SPRING, GOVERNOR LINK 260585 (08645)		EA		1	*	*	*	2	8	13
X20 00134		WASHER: GOVERNOR BRACKET AND LEVER MTG 66432 (08645)		EA		2					8	8
00137		GROUP 04 - EXHAUST SYSTEM										
00137A		0401 - MUFFLER AND PIPES										
X20 00138	5975-152-1075	LOCKNUT, EXHAUST, MUFFLER 91811 (08645)		EA		1					8	1
P 0 00139	2990-269-7145	MUFFLER, EXHAUST 89966 (08645)		EA		1	*	*	*	*	8	2
00140		GROUP 05 - COOLING SYSTEM										
00140A		0502 - SHROUDS										
X20 00141	2930-537-1363	COVER, CYLINDER HEAD 220581 (08645)		EA		1					4	1

(1) SMR CODE INDEX NO.	(2) FEDERAL STOCK NUMBER	(3) DESCRIPTION  REFERENCE NO. & MFR. CODE	(4) UNIT OF ISSUE	(5) QTY INC IN UNIT PACK	(6) QTY INC IN UNIT	(7) 15-DAY ORGANIZATIONAL MAINTENANCE ALW				(8) ILLUS- TRATION	
						(a)	(b)	(c)	(d)	(a)	(b)
						1-5	6-20	21-50	51-100	FIG NO.	ITEM NO.
X20 00142	2930-537-1360	DEFLECTOR, AIR 220692 (08645)	EA		1					9	7
X20 00143		HOUSING, BLOWER 294260 (08645)	EA		1					4	4
0 00144	5305-719-4603	SCREW, ASSEMBLED WASHER: CYLINDER SHIELD MTG 93042 (08645)	EA		1					5	1
X20 00145		SCREW, CAP, HEXAGON: SHROUD MTG, 1/4-20 THD SIZE, 9/16 IN LG 92666 (08645)	EA		3					4	7
X20 00146		SHIELD, CYLINDER 220478 (08645)	EA		1					5	2
X20 00147		WASHER, LOCK: INTERNAL AND EXTERNAL TEETH, SHROUD MTG, 1/4 IN SCREW SIZE 92778 (08645)	EA		3					4	8
00148		GROUP 06 - ELECTRICAL SYSTEM									
00148A		0605 - IGNITION COMPONENTS									
P-0 00149	2920-920-5373	ARMATURE, MAGNETO 298502 (08645)	EA		1	*	*	*	*	9	6
0 00150	5305-010-0752	BOLT: CONDENSER LEAD MTG 92786 (08645)	EA		1					9	17
X20 00151		CLAMP: CONDENSER MTG 260455 (08645)	EA		1					9	15
X20 00152	2920-537-1365	COVER, CONTACT SET 220366 (08645)	EA		1					9	9
P 0 00153	2805-920-5385	FLYWHEEL ASSEMBLY, MAGNETO 296884 (08645)	EA		1	*	*	*	*	4	20
P 0 00154	5970-789-1925	INSULATOR, PLATE: TERMINAL, CONDENSER LEAD 66935 (08645)	EA		1	*	*	2	2	9	19



(1) SMR CODE	(2) FEDERAL STOCK NUMBER	(3) DESCRIPTION		(4) UNIT OF ISSUE	(5) QTY INC IN UNIT PACK	(6) QTY INC IN UNIT	(7) 15-DAY ORGANIZATIONAL MAINTENANCE ALW				(8) ILLUS- TRATION	
							(a)	(b)	(c)	(d)	(a)	(b)
							1-5	6-20	21-50	51-100	FIG NO.	ITEM NO.
P O 00155	5315-598-5970	KEY, MACHINE: FLY WHEEL MTG 61760 (08645)	REFERENCE NO. & MFR. CODE	EA		1	*	*	*	*	4	19
P O 00156	2920-213-1147	LEAD, ELECTRICAL, SPARK PLUG: ARMATURE 293141 (08645)	USABLE ON CODE	EA		1	*	*	*	*	9	5
O 00157	5310-596-5224	NUT, HEXAGON: CONDENSER LEAD MTG 90576 (08645)		EA		1					9	20
P O 00158	2805-624-0284	PARTS KIT, IGNITION: BREAKER POINTS AND CONDENSER 294628 (08645)		EA		1	*	2	2	4	9	12
X20 00159	5340-286-4566	SPRING, HELICAL, EXTENDED: BREAKER ARM 26018 (08645)		EA		1					9	11
P O 00160	2920-294-3747	PLUG, SPARK, WITH GASKET CJ8 (08645)		EA		1	2	2	4	8	9	3
P O 00161	2920-356-1333	PLUNGER, BREAKER POINT 65704 (08645)		EA		1	*	*	*	*	9	13
O 00162	5305-992-0440	SCREW, ASSEMBLED WASHER 93381 (08645)		EA		3					9	8
O 00163	5305-719-4603	SCREW, ASSEMBLED WASHER: CONDENSER CLAMP MTG 93042 (08645)		EA		1					9	14
O 00164	5305-543-5220	SCREW, ASSEMBLED WASHER: DUST COVER MTG 93014 (08645)		EA		2					9	10
O 00165	5310-721-4667	WASHER, FLAT: FLYWHEEL MTG 220865 (08645)		EA		1					4	18
O 00166	5310-011-5544	WASHER, LOCK: CONDENSER LEAD MTG		EA		2					9	18
X20 00167	6150-624-0279	WIRE, ELECTRICAL: LEAD, CONDENSER TO INSULATOR 293999 (08645)		EA		1					9	16

(1) SMR CODE INDEX NO.	(2) FEDERAL STOCK NUMBER	(3) DESCRIPTION  REFERENCE NO. & MFR. CODE  USABLE ON CODE		(4) UNIT OF ISSUE	(5) QTY INC IN UNIT PACK	(6) QTY INC IN UNIT	(7) 15-DAY ORGANIZATIONAL MAINTENANCE ALW				(8) ILLUS- TRATION	
							(a)	(b)	(c)	(d)	(a)	(b)
							1-5	6-20	21-50	51-100	FIG NO	ITEM NO.
00168		GROUP 15 - FRAME										
00168A		1501 - FRAME ASSEMBLY										
X20 00169		BASE ASSEMBLY SX1610 (88795)		EA		1						
X20 00170		BASE, LEFT SX1644A (88795)		EA		1				10	3	
X20 00170A		BASE, RIGHT SX1644B (88795)		EA		1				10	3	
X20 00171		BASKET, CARRYING SX700 (88795)		EA		1				10	8	
X20 00172		BOLT: BASE MTG, 5/16-18 THD SIZE, 1 1/2 IN LG BE002A7 (88795)		EA		4				10	9	
X20 00173		BOLT: SUPPORT AND SPACER MTG, 3/8-16 THD SIZE, 9 IN LG SX1094 (88795)		EA		2				10	5	
X20 00174		NUT, HEXAGON: BASE MTG, 5/16-18 THD SIZE BG002B2 (88795)		EA		4				10	6	
X20 00175		NUT, STOP: SUPPORT AND SPACER MTG, 3/8-16 THD SIZE SX989 (88795)		EA		2				10	1	
X20 00176		SPACER, BASE: 4-5/8 IN LG SX988 (88795)		EA		2				10	2	
X20 00177		SUPPORT, FILTER ASSEMBLY SX1091 (88795)		EA		2				10	4	
X20 00178		WASHER, LOCK: BASE MTG, 5/16 IN SCREW SIZE AH002B1 (88795)		EA		4				10	7	

(1) SMR CODE  INDEX NO.	(2) FEDERAL STOCK NUMBER	(3) DESCRIPTION  REFERENCE NO. & MFR. CODE  USABLE ON CODE		(4) UNIT OF ISSUE	(5) QTY INC IN UNIT PACK	(6) QTY INC IN UNIT	(7) 15-DAY ORGANIZATIONAL MAINTENANCE ALW				(8) ILLUS- TRATION	
							(a)	(b)	(c)	(d)	(a)	(b)
							1-5	6-20	21-50	51-100	FIG NO.	ITEM NO.
00179		GROUP 22 - BODY CHASSIS OR HULL, AND ACCESSORY ITEMS										
00179A		2202 - ACCESSORY ITEMS										
X20 00180		ACCESSORY HOSE AND NOZZLE PACKAGE SX1077 (88795)		EA		1						
P O 00181	4720-946-9960	HOSE ASSEMBLY, SUCTION, RUBBER: WITH COUPLING SX848 (88795) (COMPONENTS SAME AS HOSE ASSEMBLY, Stock No. 4720-916-1883, EXCEPT WHERE INDIVIDUAL COMPONENTS ARE ANNOTATED)		EA		1	*	*	*	*		
P O 00182	4720-916-1883	HOSE ASSEMBLY, DISCHARGE: RUBBER W/COUPLING SX937 (88795)		EA		2	*	*	*	2	11	
X1 00183		HOSE, DISCHARGE: 50 FT 546-622-048 (25500) (USED WITH HOSE ASSEMBLY, Stock No. 4720-916-1883, ONLY)		EA		2					11	1
X1 00184		HOSE, SUCTION, FUEL: 10 FT 541-621-048 (25500) (USED WITH HOSE ASSEMBLY, Stock No. 4720-946-9960 ONLY)		EA		1					11	2
X1 00185		CLAMP, HOSE AR005A1 (08484)		EA		12					11	8
X1 00186	4730-542-4031	COUPLING, HALF QUICK 633C (81718)		EA		3					11	10
X1 00187		COUPLER, HOSE, SHANK SX1616 (81718)		EA		3						
X1 00188		FINGER RING SX1605 (88795)		EA		6						
P O 00189	4730-360-0595	GASKET H6430M (81718)		EA		3	*	2	2	2		

(1) SMR CODE	(2) FEDERAL STOCK NUMBER	(3) DESCRIPTION		(4) UNIT OF ISSUE	(5) QTY INC IN UNIT PACK	(6) QTY INC IN UNIT	(7) 15-DAY ORGANIZATIONAL MAINTENANCE ALW				(8) ILLUS- TRATION	
							(a)	(b)	(c)	(d)	(a)	(b)
							1-5	6-20	21-50	51-100	FIG NO	ITEM NO.
		REFERENCE NO. & MFR. CODE	USABLE ON CODE									
X1 00190		PLUG ASSEMBLY, DUST SX1617 (88795)		EA		3						
X1 00191	4010-628-5276	CHAIN ASSEMBLY, SINGLE H6682M (81718)		EA		6					11	3
X1 00192	4730-595-3846	PLUG, HOSE 634A (81718)		EA		3					11	9
X1 00193	4730-542-4030	COUPLING HALF, QUICK 633E (81718)		EA		3					11	7
X1 00194		CAP ASSEMBLY, DUST SX1604 (88795)		EA		3						
X1 00195	4730-555-1562	CAP, HOSE 634B (81718)		EA		3					11	5
X1 00196	4010-628-5276	CHAIN ASSEMBLY, SINGLE H6682M (81718)		EA		3						
P O 00197	4730-360-0595	GASKET H6430M (81718) (INITIALLY LISTED AS INDEX No. 00189)		EA		6					11	6
X1 00198		RING, FINGER SX1605 (88795)		EA		12					11	4
00199		2210 - DATA PLATES AND INSTRUCTION HOLDERS										
X20 00200		DRIVE SCREW BH002A (88795)		EA		4						
X20 00201		IDENTIFICATION, PLATE G3020A2 (88795)		EA		1						
X20 00202	2930-537-1364	PLATE IDENTIFICATION: CYLINDER SHIELD 220478 (08645)		EA		1						

(1) SMR CODE  INDEX NO.	(2) FEDERAL STOCK NUMBER	(3) DESCRIPTION  REFERENCE NO. & MFR. CODE	(4) UNIT OF ISSUE	(5) QTY INC IN UNIT PACK	(6) QTY INC IN UNIT	(7) 15-DAY ORGANIZATIONAL MAINTENANCE ALW				(8) ILLUS- TRATION	
						(a)	(b)	(c)	(d)	(a)	(b)
						1-5	6-20	21-50	51-100	FIG NO.	ITEM NO.
00203		GROUP 72 - DISPENSING AND SERVICING EQUIPMENT COMPONENTS									
00203A		7202 - PUMPS AND METERS									
X20 00204		PUMP ASSEMBLY SX1603 (88795) (INCLUDES COMPONENTS OF KIT, STOCK No. 4320-989-3259)	EA		1						
X1 00205		CASING ASSEMBLY SX1608 (88795)	EA		1						
X1 00207		CAP ASSEMBLY, DUST SX1604 (88795)	EA		1				12	22	
X1 00208	4730-555-1562	CAP 634B (81718)	EA		1						
X1 00209	4010-628-5276	CHAIN ASSEMBLY, SINGLE SECURITY H6682M (81718)	EA		1						
X1 00210		FINGER, RING SX1605 (88795)	EA		2						
P O 00211	4730-360-0595	GASKET: DUST CAP H6430M (81718) (INITIALLY LISTED AS INDEX No. 00189)	EA		1				12	23	
X20 00213	4730-805-6726	COUPLING, HALF QUICK: PUMP CASING 633F (81718)	EA		3				12	25	
X20 00214		ELBOW, SIDE OUTLET, PUMP: ALL ENDS FEMALE, 1 1/2-1 1/2 THD SIZE SX990 (88795)	EA		1				12	1	
X20 00215		HANDLE, PUMP C2002A1 (88795)	EA		1				12	2	
X20 00216		NIPPLE: 1 1/2 IN, ALUM, 2 IN LG PUMP CASING SX715 (88795)	EA		1				12	27	

(1) SMR CODE INDEX NO.	(2) FEDERAL STOCK NUMBER	(3) DESCRIPTION  REFERENCE NO. & MFR. CODE  USABLE ON CODE	(4) UNIT OF ISSUE	(5) QTY INC IN UNIT PACK	(6) QTY INC IN UNIT	(7) 15-DAY ORGANIZATIONAL MAINTENANCE ALW				(8) ILLUS- TRATION	
						(a)	(b)	(c)	(d)	(a)	(b)
						1-5	6-20	21-50	51-100	FIG NO.	ITEM NO.
X20 00217		NUT, CAP: PUMP CASING, 3/8-16 THD SIZE BG001A2 (88795)	EA		2					12	24
X20 00218		PLUG, PIPE: 1/2 IN NPT PUMP CASING AJ002A4 (88795)	EA		1					12	21
X20 00221		ADAPTER ASSEMBLY SX1609 (88795)	EA		1					12	
X20 00224		BOLT: PUMP MTG, 5/16-18 THD SIZE, 5/8 IN LG BE002A2 (88795)	EA		1					12	20
X20 00225		BOLT: PUMP TO ENGINE MTG, 5/16-24 THD SIZE, 3/4 IN LG BE001A3 (88795)	EA		4					12	12
X20 00226		BOLT, MACHINE: PUMP MTG, 5/16-18 THD SIZE, 1 IN LG BE002A5 (88795)	EA		1					12	17
X20 00228		NUT, HEXAGON: PUMP ADAPTER MTG, 3/8-16 THD SIZE BG002B3 (88795)	EA		4					12	14
X20 00229		NUT, HEXAGON: PUMP MTG, 5/16-18 THD SIZE BG002B2 (88795)	EA		5					12	19
X20 00230		WASHER, FLAT: PUMP MTG, 5/16 IN SCREW SIZE AD001A1 (88795)	EA		1					12	18
X20 00231		WASHER, LOCK: PUMP MTG, 5/16 IN SCREW SIZE AH002B1 (88795)	EA		10					12	13
X20 00232		WASHER, LOCK: PUMP ADAPTER, 3/8 IN SCREW SIZE AH002B2 (88795)	EA		4					12	15
00238		7203 - VALVES, FITTINGS, NOZZLES									
P OR 00239	4320-946-9961	NOZZLE ASSEMBLY, NONAUTOMATIC SX931A (88795)	EA		2	*	*	*	*		
X20 00241	4730-715-1558	COUPLING, HALF, QUICK 633B (81718)	EA		1						

(1) SMR CODE	(2) FEDERAL STOCK NUMBER	(3) DESCRIPTION	(4) UNIT OF ISSUE	(5) QTY INC IN UNIT PACK	(6) QTY INC IN UNIT	(7) 15-DAY ORGANIZATIONAL MAINTENANCE ALW				(8) ILLUS- TRATION	
						(a)	(b)	(c)	(d)	(a)	(b)
						1-5	6-20	21-50	51-100	FIG NO.	ITEM NO.
		REFERENCE NO. & MFR. CODE									
X20 00243		PLUG ASSEMBLY, DUST SX1617 (88795)	EA		1						
X20 00244		CHAIN, BRASS: 6 IN H6682M (81718)	EA		1					13	11
X20 00245		COUPLER SX888 (81718)	EA		1					13	3
P O 00246	4730-360-0595	GASKET H6430M (81718) (INITIALLY LISTED AS INDEX No. 00189)	EA		1					13	2
X20 00247	4730-595-3846	PLUG, DUST 634A (81718)	EA		1					13	1
X20 00248		RING, FINGER SX1605 (88795)	EA		2					13	10
X1 00249		SCREEN, FILTER: 100 MESH 153 (81718)	EA		1					13	5
X20 00250		SCREW, GROUNDING WIRE SX1048 (88795)	EA		1					13	9
X20 00251		SPOUT, RIGID: NOZZLE ASSEMBLY CC296 1 1/2X1 5/8 (81718)	EA		1					13	6
X20 00252		WIRE ASSEMBLY, GROUNDING 190W (81718)	EA		1					13	8
00253		7204 - MISCELLANEOUS PARTS AND ACCESSORIES									
X20 00254		GAGE ASSEMBLY, 30-NO-GO: 100 GPM SX1611 (88795)	EA		1						
X1 00256		COVER, END: 100 GPM SX1613 (88795)	EA		1					15	5
P O 00257	4930-872-1779	ELEMENT, FILTER 041420S (90005)	EA		5	2	2	4	8	15	1

(1) SMR CODE INDEX NO.	(2) FEDERAL STOCK NUMBER	(3) DESCRIPTION  REFERENCE NO: & MFR. CODE  USABLE ON CODE	(4) UNIT OF ISSUE	(5) QTY INC IN UNIT PACK	(6) QTY INC IN UNIT	(7) 15-DAY ORGANIZATIONAL MAINTENANCE ALW				(8) ILLUS- TRATION	
						(a)	(b)	(c)	(d)	(a)	(b)
						1-5	6-20	21-50	51-100	FIG NO.	ITEM NO.
P O 00259	5330-526-7517	O RING, 100 GPM GAGE MS29513-249 (96906)	EA		1	*	2	2	4	15	4
X20 00260		ADAPTER, HOSE MAB6 (88795)	EA		2					14	8
X20 00261	4730-805-6726	ADAPTER, HOSE: 1 1/2 IN 633F (81718)	EA		2					14	2
X1 00262		CAP ASSEMBLY, DUST SX1604 (88795)	EA		2					14	4
X1 00263		DUST CAP 634B (88795)	EA		2						
X1 00264		FINGER RING SX1605 (88795)	EA		4						
P O 00265	4730-360-0595	GASKET H6430M (81718) (INITIALLY LISTED AS INDEX No. 00189)	EA		2					14	3
X1 00266	4010-628-5276	CHAIN, ASSEMBLY, SING H6682M (81718)	EA		2						
P O 00267	4320-920-5342	CLAMP, HOSE QS200M28A (88795)	EA		4	*	*	*	2	14	9
X20 00268	4730-020-9293	COUPLER: 1 1/2 IN 633H (81718)	EA		1					14	12
X20 00269		HOSE, GAGE CONNECTING SX1619 (88795)	EA		1					14	10
X20 00270		NIPPLE: 1 1/2, ALUM, 2 IN LG SX715 (88795)	EA		1					14	5
P O 00271	6685-923-7077	GAGE, PRESSURE, DIAL 022-171 (38508)	EA		2	*	*	*	*	14	7
X20 00272		PLUG ASSEMBLY, DUST SX1617 (88795)	EA		1					14	11



(1) SMR CODE  INDEX NO.	(2) FEDERAL STOCK NUMBER	(3) DESCRIPTION  REFERENCE NO. & MFR. CODE  USABLE ON CODE		(4) UNIT OF ISSUE	(5) QTY INC IN UNIT PACK	(6) QTY INC IN UNIT	(7) 15-DAY ORGANIZATIONAL MAINTENANCE ALW				(8) ILLUS- TRATION	
							(a)	(b)	(c)	(d)	(a) FIG NO.	(b) ITEM NO.
							1-5	6-20	21-50	51-100		
X1 00273		FINGER RING SX1605 (88795)		EA		2						
P 0 00274	4730-360-0595	GASKET H6430M (81718) (INITIALLY LISTED AS INDEX No. 00189)		EA		1					14	3
X1 00275	4730-595-3846	PLUG, HOSE 634A (81718)		EA		1						
X1 00276	4010-628-5276	CHAIN ASSEMBLY, SINGLE H6682M (81718)		EA		1						
X20 00277		TEE, ALUM: 1 1/2, 1/2 X 1/2 SX733 (88795)		EA		1					14	1



(1) SMR CODE INDEX NO.	(2) FEDERAL STOCK NUMBER	(3) DESCRIPTION  REFERENCE NO. & MFR. CODE  USABLE ON CODE	(4) UNIT OF ISSUE	(5) QTY INC IN UNIT PACK	(6) QTY INC IN UNIT	(7) 30-DAY DS MAINT ALLOWANCE			(8) 30-DAY GS MAINT ALLOWANCE			(9) 1-YR ALW PER 100 EQUIP CNTGCTY	(10) DEPOT MAINT ALW- PER 100 EQUIP	(11) ILLUS- TRATION		
						(a)	(b)	(c)	(a)	(b)	(c)			(a)	(b)	
						1-20	21-50	51-100	1-20	21-50	51-100			FIG NO.	ITEM NO	
00013		0101 - CRANKCASE, BLOCK, CYLINDER HEAD														
X2F 00014		BOLT, ASSEMBLED WASHER: CRANKCASE COVER MTG 93032 (08645)	EA		6										2	1
X2F 00015		BOLT, MACHINE: CYLINDER HEAD MTG, 5/16-18 THD SIZE, 1 15/16 IN LG 93111 (08645)	EA		5										9	4
X2F 00016		BOLT, MACHINE: CYLINDER HEAD MTG, 5/16-18 THD SIZE, 2-5/16 IN LG 93113 (08645)	EA		3										9	1
X2F 00017	2805-658-3916	COVER, CRANKCASE 294306 (08645)	EA		1										2	2
X1 00018	2805-678-4432	GASKET: CRANKCASE COVER MTG 27586 (08645) (COMPONENT OF GASKET SET, STOCK No. 2805-828-0783, SEE GROUP 0100)	EA		1										2	3
X2F 00019	2805-920-5383	CYLINDER ASSEMBLY 296610 (08645)	EA		1										1	4
P F 00020	2805-351-6692	SEAL, OIL, PLAIN ENCASED: CRANKSHAFT 89660 (08645)	EA		1	*	2	2	*	2	2	20	20	1	5	
P F 00021	2805-624-0278	SEAL, OIL: CRANKCASE COVER 293740 (08645)	EA		1	*	2	2	*	2	2	20	20	2	16	
X1 00022	2805-678-4395	GASKET: CYLINDER HEAD MTG 27670 (08645) (COMPONENT OF GASKET SET, STOCK No. 2805-828-0783, SEE GROUP 0100)	EA		1										9	21
P F 00023	2805-594-1030	HEAD, CYLINDER 210812 (08645)	EA		1	*	*	*	*	*	*	5	5	9	2	
F 00024	4730-950-7613	PLUG, PIPE: OIL DRAIN 91249 (08645)	EA		1										1	9

(1) SMR CODE INDEX NO.	(2) FEDERAL STOCK NUMBER	(3) DESCRIPTION REFERENCE NO. & MFR. CODE USABLE ON CODE		(4) UNIT OF ISSUE	(5) QTY INC IN UNIT PACK	(6) QTY INC IN UNIT	(7) 30-DAY DS MAINT ALLOWANCE			(8) 30-DAY GS MAINT ALLOWANCE			(9) 1-YR ALW PER 100 EQUIP CNTGCTY	(10) DEPOT MAINT ALW PER 100 EQUIP	(11) ILLUS-TRATION		
							(a)	(b)	(c)	(a)	(b)	(c)			(a) FIG NO.	(b) ITEM NO.	
							1-20	21-50	51-100	1-20	21 50	51-100					
00025		0102 - CRANKSHAFT															
P F 00026	3110-144-9004	BEARING, BALL, ANNULAR: CRANKSHAFT 99158 (08645)		EA	1	*	*	2	*	*	2	10	10	3	10		
P F 00027	2805-920-5384	CRANKSHAFT 260182 (08645)		EA	1	*	*	*	*	*	*	5	5	3	9		
00028		0104 - PISTONS, CONNECTING RODS															
P F 00029	2805-949-0543	PISTON ASSEMBLY, STANDARD 295455 (08645)		EA	1	*	*	*	*	*	*	5	5	3	3		
P F 00030	2805-353-7712	PIN, PISTON, STANDARD 291925 (08645)		EA	1	*	*	*	*	*	*	5	5	3	2		
P F 00031	5340-356-1325	RING, RETAINING: PISTON PIN 26026 (08645)		EA	2	2	2	3	2	2	3	30	30	3	1		
P F 00032	2805-608-8509	ROD ASSEMBLY, CONNECTING 294367 (08645)		EA	1	2	2	3	2	2	3	30	30	3	5		
F 00033	5306-817-0730	BOLT, MACHINE: CONNECTING ROD LOCK 92296 (08645)		EA	2										3	7	
K2F 00034	2805-678-4423	DIPPER, CONNECTING ROD 220670 (08645)		EA	1										3	8	
P F 00035	2805-608-8508	LOCK, CONNECTING ROD SCREW 220756 (08645)		EA	1	2	2	3	2	2	3	30	30	3	6		
P F 00036	2805-920-5387	RING SET, STANDARD, PISTON 295657 (08645)		EA	1	2	2	3	2	2	3	30	30	3	4		
00037		0105 - VALVES, CAMSHAFTS, AND TIMING SYSTEM															
P F 00038	2805-678-4421	CAMSHAFT, WITH GEAR 210453 (08645)		EA	1	*	*	*	*	*	*	5	5	1	17		

(1) SMR CODE INDEX NO.	(2) FEDERAL STOCK NUMBER	(3) DESCRIPTION  REFERENCE NO. & MFR. CODE  USABLE ON CODE	(4) UNIT OF ISSUE	(5) QTY INC IN UNIT PACK	(6) QTY INC IN UNIT	(7) 30-DAY DS MAINT ALLOWANCE			(8) 30-DAY GS MAINT ALLOWANCE			(9) 1-YR ALW PER 100 EQUIP CNTGCTY	(10) DEPOT MAINT ALW- PER 100 EQUIP	(11) ILLUS- TRATION	
						(a)	(b)	(c)	(a)	(b)	(c)			(a)	(b)
						1-20	21-50	51-100	1-20	21 50	51-100			FIG NO.	ITEM NO
P F 00039	5315-276-4081	PIN, STRAIGHT, HEADLESS: EXHAUST VALVE 230126 (08645)	EA		1	*	*	*	*	*	*	5	5	1	13
P F 00040	5315-248-0052	PIN, STRAIGHT, HEADLESS: INTAKE VALVE 23187 (08645)	EA		1	*	*	*	*	*	*	5	5	1	12
P F 00041	2805-353-7587	RETAINER, EXHAUST VALVE 230127 (08645)	EA		1	*	*	*	*	*	*	5	5	1	14
P F 00042	2805-342-7432	ROTATOR CAP, EXHAUST VALVE 292259 (08645)	EA		1	*	*	2	*	*	2	10	10	1	15
P F 00043	2805-356-1334	SEAT, VALVE SPRING: INTAKE 23184 (08645)	EA		1	*	*	*	*	*	*	5	5	1	11
P F 00044	2805-254-1370	SPRING, HELICAL, COMPRESSION, EXHAUST VALVE 26478 (08645)	EA		1	*	2	2	*	2	2	20	20	1	16
P F 00045	2805-992-0403	SPRING, HELICAL, COMPRESSION, INTAKE VALVE 260552 (08645)	EA		1	*	2	2	*	2	2	20	20	1	10
P F 00046	2805-678-4425	TAPPET, VALVE 230173 (08645)	EA		2	*	*	*	*	*	*	5	5	1	1
P F 00047	2805-920-5388	VALVE, EXHAUST 296676 (08645)	EA		1	*	2	2	*	2	2	15	15	1	2
P F 00048	2805-018-5293	VALVE, INTAKE 296677 (08645)	EA		1	*	*	2	*	*	2	10	10	1	3
00049		0106 - ENGINE LUBRICATION SYSTEM													
0 00050	5306-073-8255	BOLT, ASSEMBLED WASHER: BREATHER MTG 93394 (08645)	EA		2									5	8
P 0 00051	2805-624-0282	BREATHER, VALVE CHAMBER 294178 (08645)	EA		1	*	*	*	*	*	*	5	5	5	4
P 0 00052	2805-422-5804	CAP, OIL FILLER: CRANKCASE COVER 69345 (08645)	EA		1	*	*	*	*	*	*	5	5	2	11

(1) SMR CODE INDEX NO.	(2) FEDERAL STOCK NUMBER	(3) DESCRIPTION  REFERENCE NO. & MFR. CODE  USABLE ON CODE	(4) UNIT OF ISSUE	(5) QTY INC IN UNIT PACK	(6) QTY INC IN UNIT	(7) 30 DAY DS MAINT ALLOWANCE			(8) 30-DAY - GS MAINT ALLOWANCE			(9) 1-YR ALW PER 100 EQUIP CNTGCTY	(10) DEPOT MAINT ALW- PER 100 EQUIP	(11) ILLUS- TRATION		
						(a)	(b)	(c)	(a)	(b)	(c)			(a)	(b)	
						1-20	21-50	51-100	1-20	21-50	51-100			FIG NO.	ITEM NO.	
X1 00053	2805-678-4431	GASKET: VALVE CHAMBER COVER MTG 27549 (08645) (COMPONENT OF GASKET SET, Stock No. 2805-828-0783, SEE GROUP 0100)	EA		1										5	3
P O 00054	2805-776-2282	GROMMET: BREATHER COVER 66578 (08645)	EA		1	2	2	3	2	2	3	30	30		5	5
X20 00055		GROMMET, BREATHER TUBE 67608 (08645)	EA		1										5	7
O 00056	4730-192-9481	NIPPLE, PIPE: OIL FILLER, 3/4 IN, 2 IN LG 91258 (08645)	EA		1										2	12
P O 00057	2805-849-3141	TUBE, BREATHER 230634 (08645)	EA		1	*	*	*	*	*	*	5	5		5	6
00058		0107 - ENGINE STARTING SYSTEM														
P O 00059	2990-907-0644	CLUTCH ASSEMBLY STARTER 298310 (08645)	EA		1	*	*	2	*	*	2	10	10			
X1 00060	3110-100-6180	BEARING, BALL: CLUTCH HOUSING 63770 (08645)	EA		6										4	16
X1 00061	5840-787-6662	BUMPER, STARTER PULLEY 66528 (08645)	EA		1										4	10
X1 00062	2990-768-0723	GRIP, ENGINE STARTER 66728 (08645)	EA		1										4	5
X20 00063		HOUSING, STARTER CLUTCH 211383 (08645)	EA		1										4	17
X1 00064	5315-855-4336	PIN, STARTER GRIP 230228 (08645)	EA		1										4	6
X1 00065	2990-786-2030	PULLEY, ENGINE STARTER 294088 (08645)	EA		1										4	9
P O 00066	2990-930-1737	RATCHET, REWIND 298436 (08645)	EA		1	*	*	*	*	*	*	5	5		4	15

(1) SMR CODE INDEX NO.	(2) FEDERAL STOCK NUMBER	(3) DESCRIPTION  REFERENCE NO. & MFR. CODE  USABLE ON CODE		(4) UNIT OF ISSUE	(5) QTY INC IN UNIT PACK	(6) QTY INC IN UNIT	(7) 30-DAY DS MAINT ALLOWANCE			(8) 30-DAY GS MAINT ALLOWANCE			(9) 1-YR ALW PER 100 EQUIP CNTGCTY	(10) DEPOT MAINT ALW- PER 100 EQUIP	(11) ILLUS- TRATION	
							(a)	(b)	(c)	(a)	(b)	(c)			(a) FIG NO.	(b) ITEM NO.
							1-20	21-50	51-100	1-20	21-50	51-100				
P O 00067	2990-174-5255	ROPE, ENGINE STARTER: 47 1/8 IN LG 294584 (08645)		EA		1	4	8	17	4	8	17	200	200	4	2
X20 00068	2990-930-1738	SCREEN, REWIND STARTER PULL 221661 (08645)		EA		1									4	12
O 00069	5305-719-4603	SCREW, ASSEMBLED WASHER: SCREEN MTG 93042 (08645)		EA		4									4	11
P O 00070	2990-769-4104	SPRING, REWIND STARTER 294303 (08645)		EA		1	*	*	2	*	*	2	10	10	4	3
X20 00071		WASHER, CLUTCH RETAINER 221653 (08645)		EA		1									4	14
X20 00072		WASHER, RUBBER, RATCHET SEALING 68238 (08645)		EA		1									4	13
00073		GROUP 03 - FUEL SYSTEM														
00073A		0301 - CARBURETOR														
P O 00074	2910-920-5361	CARBURETOR ASSEMBLY 296784 (08645)		EA		1	2	2	3	2	2	3	30	30	6	7
X2F 00075	2910-920-5369	CAP. SPRING 221377 (08645)		EA		1									7	4
X2F 00076	2910-920-5370	COVER, DIAPHRAGM 210959 (08645)		EA		1									7	7
X2F 00077		CRANK, BELL 297069 (08645)		EA		1									7	11
P F 00078	2910-920-5368	DIAPHRAGM, CARBURETOR 270026 (08645)		EA		1	2	2	3	2	2	3	30	30	7	5
P F 00079	5330-924-0090	GASKET, NEEDLE VALVE NUT 66594 (08645)		EA		1	2	4	8	2	4	8	100	100	7	18
X1 00080	2910-920-5371	HOUSING, FUEL PIPE 296178 (08645)		EA		1										





(1) SMR CODE INDEX NO.	(2) FEDERAL STOCK NUMBER	(3) DESCRIPTION  REFERENCE NO. & MFR. CODE  USABLE ON CODE	(4) UNIT OF ISSUE	(5) QTY INC IN UNIT PACK	(6) QTY INC IN UNIT	(7) 30-DAY DS MAINT ALLOWANCE			(8) 30-DAY GS MAINT ALLOWANCE			(9) 1-YR ALW PER 100 EQUIP CNTGCT	(10) DEPOT MAINT ALW- PER 100 EQUIP	(11) ILLUS- TRATION	
						(a)	(b)	(c)	(a)	(b)	(c)			(a)	(b)
						1-20	21-50	51-100	1-20	21-50	51-100			FIG NO.	ITEM NO
X20 00095		SCREW, ASSEMBLED WASHER: CARBURETOR TO FUEL TANK MTG, 10-32 THD SIZE, 5/8 IN LG 93341 (08645)	EA		3									6	12
X2F 00096		SCREW: BELL CRANK MTG 230671 (08645)	EA		1									7	12
X20 00097		SCREW, CAP, HEXAGON HEAD: CARBURETOR TO ENGINE MTG 1/4-20 THD SIZE, 3/4 IN LG 93357 (08645)	EA		2									6	5
X2F 00098		SCREW, DIAPHRAGM COVER 93141 (08645)	EA		4									7	8
X2F 00099		SCREW, MACHINE, THROTTLE: SPEED ADJUSTING 93392 (08645)	EA		1									7	1
00100		0304 - AIR CLEANER													
P 0 00101	2940-294-1599	AIR CLEANER, INTAKE 294870 (08645)	EA		1	*	*	*	*	*	*	5	5	6	2
P 0 00102	2940-688-7912	FILTER ELEMENT, AIR INTAKE 27987 (08645)	EA		1	*	2	2	*	2	2	20	20	6	3
X1 00103-	2940-608-8514	GASKET: AIR CLEANER 27600 (08645) (COMPONENT OF GASKET SET, Stock No. 2805-828-0783, SEE GROUP 0100)	EA		1									6	4
X20 00104		SCREW, AIR CLEANER 93322 (08645)	EA		1									6	1
00105		0306 - TANKS, LINES, AND FITTINGS													
X20 00106		TANK, FUEL 296591 (08645)	EA		1									6	9
P 0 00107	2910-707-7503	CAP, FUEL TANK 293270 (08645)	EA		1	*	*	2	*	*	2	10	10	6	11



(1) SMR CODE INDEX NO.	(2) FEDERAL STOCK NUMBER	(3) DESCRIPTION  REFERENCE NO. & MFR. CODE  USABLE ON CODE	(4) UNIT OF ISSUE	(5) QTY INC IN UNIT PACK	(6) QTY INC IN UNIT	(7) 30 DAY DS MAINT ALLOWANCE			(8) 30-DAY GS MAINT ALLOWANCE			(9) 1-YR ALW PER 100 EQUIP CNTGCTY	(10) DEPOT MAINT ALW- PER 100 EQUIP	(11) ILLUS- TRATION	
						(a)	(b)	(c)	(a)	(b)	(c)			(a)	(b)
						1-20	21-50	51-100	1-20	21-50	51-100			FIG NO.	ITEM NO
K20 00122		NUT, CONTROL ROD 230149 (08645)	EA		1									8	3
F 00123	5315-626-1789	PIN, STOP: GOVERNOR LEVER SHAFT 93043 (08645)	EA		1									2	15
K2F 00124	2805-679-5784	RETAINER, GOVERNOR SHAFT 230177 (08645)	EA		1									2	6
K20 00125		ROD, CONTROL: GOVERNOR 230680 (08645)	EA		1									8	6
K20 00126		SCREW, ASSEMBLED WASHER: BRACKET MTG, 10-24 THD SIZE, 9/16 IN LG 93062 (08645)	EA		1									8	11
F 00127	5305-753-4269	SCREW, CAP, SLOTTED: GOVERNOR MTG 93064 (08645)	EA		2									2	9
O 00128	5306-543-5219	SCREW, ASSEMBLED WASHER: THROTTLE LEVER MTG, 10-24 THD SIZE, 3/8 IN LG 93067 (08645)	EA		1									8	9
O 00129	5305-719-4783	SCREW, MACHINE: LEVER MTG 93100 (08645)	EA		1									8	17
K2F 00130	2910-711-5609	SHAFT, GOVERNOR LEVER 230181 (08645)	EA		1									2	13
P O 00131	2990-624-0260	SPRING, CONTROL ROD 26855 (08645)	EA		1	*	2	2	*	2	2	15	15	8	4
P O 00132	5340-945-0493	SPRING, GOVERNOR LEVER 260545 (08645)	EA		1	*	2	2	*	2	2	15	15	8	15
P O 00133	2990-898-2097	SPRING, GOVERNOR LINK 260585 (08645)	EA		1	*	2	2	*	2	2	15	15	8	13
X20 00134		WASHER: GOVERNOR BRACKET AND LEVER MTG 66432 (08645)	EA		2									8	8
F 00135	5310-353-7577	WASHER, FLAT: GOVERNOR LEVER SHAFT 22826 (08645)	EA		1									2	14



(1) SMR CODE INDEX NO.	(2) FEDERAL STOCK NUMBER	(3) DESCRIPTION  REFERENCE NO. & MFR. CODE  USABLE ON CODE	(4) UNIT OF ISSUE	(5) QTY INC IN UNIT PACK	(6) QTY INC IN UNIT	(7) 30-DAY DS MAINT ALLOWANCE			(8) 30-DAY GS MAINT ALLOWANCE			(9) 1-YR ALW PER 100 EQUIP CNTGCCY	(10) DEPOT MAINT ALW- PER 100 EQUIP	(11) ILLUS- TRATION		
						(a)	(b)	(c)	(a)	(b)	(c)			(a)	(b)	
						1-20	21-50	51-100	1-20	21 50	51-100			FIG NO.	ITEM NO	
00148		GROUP 06 - ELECTRICAL SYSTEM														
00148A		0605 - IGNITION COMPONENTS														
P O 00149	2920-920-5373	ARMATURE, MAGNETO 298502 (08645)	EA		1	*	*	*	*	*	*	3	3	9	6	
O 00150	5305-010-0752	BOLT: CONDENSER LEAD MTG 92786 (08645)	EA		1									9	17	
X20 00151		CLAMP: CONDENSER MTG 260455 (08645)	EA		1									9	15	
X20 00152	2920-537-1365	COVER, CONTACT SET 220366 (08645)	EA		1									9	9	
P O 00153	2805-920-5385	FLYWHEEL ASSEMBLY, MAGNETO 296884 (08645)	EA		1	*	*	2	*	*	2	5	5	4	20	
P O 00154	5970-789-1925	INSULATOR, PLATE: TERMINAL, CONDENSER LEAD 66935 (08645)	EA		1	2	2	3	2	2	3	30	30	9	19	
P O 00155	5315-598-5970	KEY, MACHINE: FLYWHEEL MTG 61760 (08645)	EA		1	*	*	2	*	*	2	10	10	4	19	
P O 00156	2920-213-1147	LEAD, ELECTRICAL, SPARK PLUG: ARMATURE 293141 (08645)	EA		1	*	*	*	*	*	*	5	5	9	5	
O 00157	5310-596-5224	NUT, HEXAGON: CONDENSER LEAD MTG 90576 (08645)	EA		1									9	20	
P O 00158	2805-624-0284	PARTS KIT, IGNITION: BREAKER POINTS AND CONDENSER 294628 (08645)	EA		1	2	4	8	2	4	8	100	100	9	12	
X20 00159	5340-286-4566	SPRING, HELICAL, EXTENDED: BREAKER ARM 26018 (08645)	EA		1									9	11	
P O 00160	2920-294-3747	PLUG, SPARK, WITH GASKET CJ8 (08645)	EA		1	4	8	17	4	8	17	200	200	9	3	



(1) SMR CODE INDEX NO.	(2) FEDERAL STOCK NUMBER	(3) DESCRIPTION  REFERENCE NO. & MFR. CODE  USABLE ON CODE	(4) UNIT OF ISSUE	(5) QTY INC IN UNIT PACK	(6) QTY INC IN UNIT	(7) 30-DAY DS MAINT ALLOWANCE			(8) 30-DAY GS MAINT ALLOWANCE			(9) 1-YR ALW PER 100 EQUIP CNTGCTY	(10) DEPOT MAINT ALW- PER 100 EQUIP	(11) ILLUS- TRATION	
						(a)	(b)	(c)	(a)	(b)	(c)			(a)	(b)
						1-20	21-50	51-100	1-20	21 50	51-100			FIG NO.	ITEM NO
X20 00174		NUT, HEXAGON: BASE MTG, 5/16-18 THD SIZE BG002B2 (88795)	EA		4									10	6
X20 00175		NUT, STOP: SUPPORT AND SPACER MTG, 3/8-16 THD SIZE SX989 (88795)	EA		2									10	1
X20 00176		SPACER, BASE: 4-5/8 IN. LG SX988 (88795)	EA		2									10	2
X20 00177		SUPPORT, FILTER ASSEMBLY SX1091 (88795)	EA		2									10	4
X20 00178		WASHER, LOCK: BASE MTG, 5/16 IN SCREW SIZE AH002B1 (88795)	EA		4									10	7
00179		GROUP 22 - BODY CHASSIS OR HULL, AND ACCESSORY ITEMS													
00179A		2202 - ACCESSORY ITEMS													
X20 00180		ACCESSORY HOSE AND NOZZLE PACKAGE SX1077 (88795)	EA		1										
P O 00181	4720-946-9960	HOSE ASSEMBLY, SUCTION, RUBBER: WITH COUPLING SX848 (88795) (COMPONENTS SAME AS HOSE ASSEMBLY, Stock No. 4720-916-1883, EXCEPT WHERE INDIVIDUAL COMPONENTS ARE ANNOTATED)	EA		1	*	*	*	*	*	*	5	5		
P O 00182	4720-916-1883	HOSE ASSEMBLY, DISCHARGE: RUBBER W/COUPLING SX937 (88795)	EA		2	*	2	2	*	2	2	20	20	11	
X1 00183		HOSE, DISCHARGE: 50 FT 546-622-048 (25500) (USED WITH HOSE ASSEMBLY, Stock No. 4720-916-1883, ONLY)	EA		2									11	1
X1 00184		HOSE, SUCTION, FUEL: 10 FT 541-621-048 (25500) (USED WITH HOSE ASSEMBLY, Stock No. 4720-946-9960 ONLY)	EA		1									11	2
X1 00185		CLAMP, HOSE AR005A1 (08484)	EA		12									11	8





SMR CODE INDEX NO.	FEDERAL STOCK NUMBER	DESCRIPTION  REFERENCE NO. & MFR. CODE	USABLE ON CODE	UNIT OF ISSUE	QTY INC IN UNIT PACK	QTY INC IN UNIT	(7) 30-DAY DS MAINT ALLOWANCE			(8) 30-DAY GS MAINT ALLOWANCE			(9) 1-YR ALW PER 100 EQUIP CNTGCTY	(10) DEPOT MAINT ALW- PER 100 EQUIP	(11) ILLUS- TRATION		
							(a)	(b)	(c)	(a)	(b)	(c)			(a)	(b)	
							1-20	21-50	51-100	1-20	21-50	51-100			FIG NO.	ITEM NO.	
00199		2210 - DATA PLATES AND INSTRUCTION HOLDERS															
X20 00200		DRIVE SCREW BH002A (88795)		EA	4												
X20 00201		IDENTIFICATION, PLATE G3020A2 (88795)		EA	1												
X20 00202	2930-537-1364	PLATE IDENTIFICATION: CYLINDER SHIELD 220478 (08645)		EA	1												
00203		GROUP 72 - DISPENSING AND SERVICING EQUIPMENT COMPONENTS															
00203A		7202 - PUMPS AND METERS															
X20 00204		PUMP ASSEMBLY SX1603 (88795) (INCLUDES COMPONENTS OF KIT, STOCK No. 4320-989-3259)		EA	1												
X1 00205		CASING ASSEMBLY SX1608 (88795)		EA	1												
X2F 00206		CASING, PUMP E9001A1 (88795)		EA	1											12	26
X1 00207		CAP ASSEMBLY, DUST SX1604 (88795)		EA	1											12	22
X1 00208	4730-555-1562	CAP 634B (81718)		EA	1												
X1 00209	4010-628-5276	CHAIN ASSEMBLY, SINGLE H6682M (81718)		EA	1												
X1 00210		FINGER, RING SX1605 (88795)		EA	2												
P O 00211	4730-360-0595	GASLINE: DUST CAP H6430M (81718) (INITIALLY LISTED AS INDEX No. 00189)		EA	1											12	23

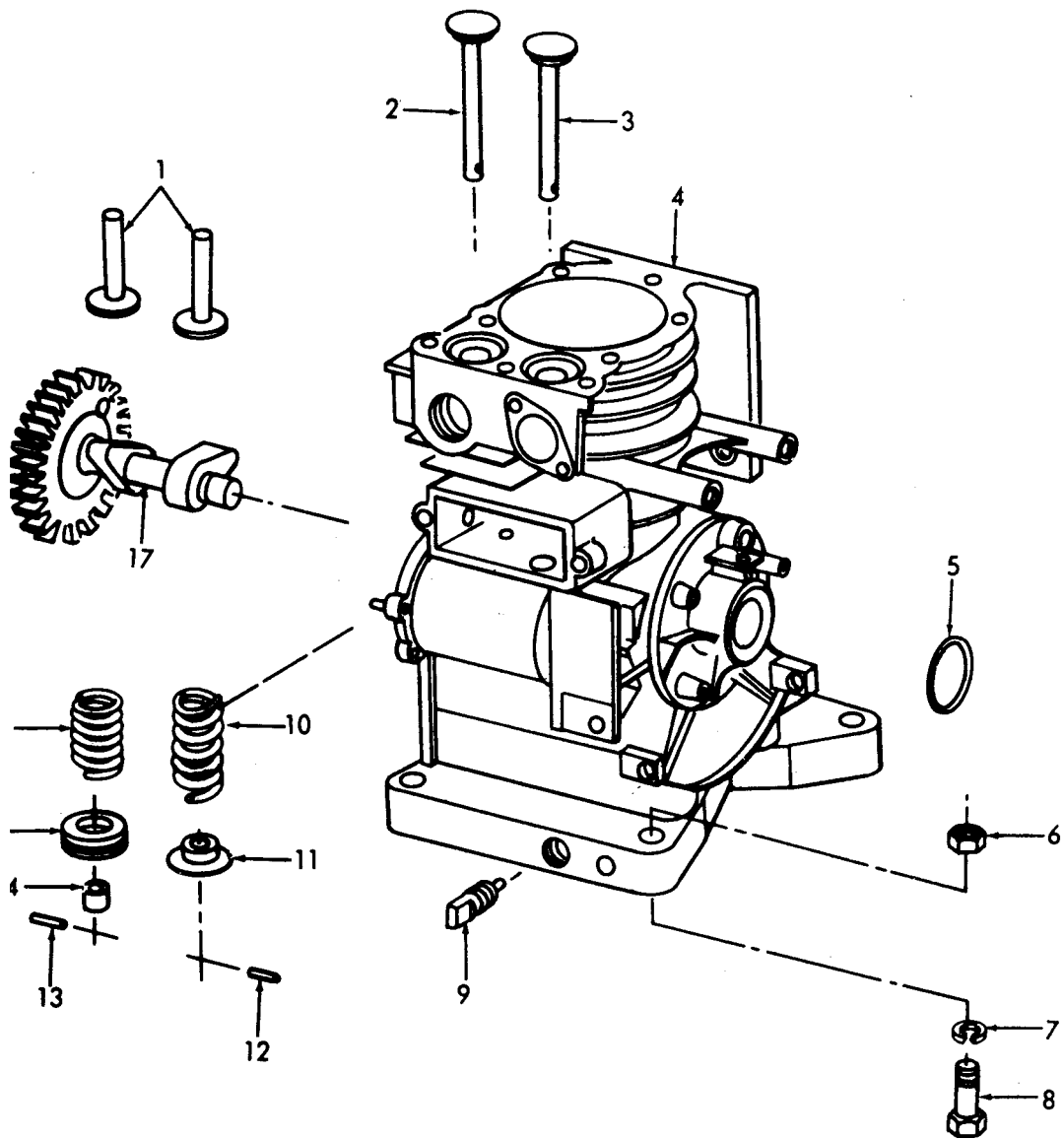


SMR CODE INDEX NO.	FEDERAL STOCK NUMBER	DESCRIPTION  REFERENCE NO. & MFR. CODE                      USABLE ON CODE	UNIT OF ISSUE	QTY INC IN UNIT PACK	QTY INC IN UNIT	DS MAINT ALLOWANCE			GS MAINT ALLOWANCE			1-YR ALW PER 100 EQUIP CNTGCV	DEPOT MAINT ALW- PER 100 EQUIP	ILLUS- TRATION		
						(a)	(b)	(c)	(a)	(b)	(c)			(a)	(b)	
						1-20	21-50	51-100	1-20	21-50	51-100			FIG NO.	ITEM NO	
X20 00226		BOLT, MACHINE: PUMP MTG, 5/16-18 THD SIZE, 1 IN LG BE002A5 (88795)	EA		1										12	17
P F 00227	4320-946-9948	IMPELLER, PUMP A7004A1 (88795)	EA		1	*	*	*	*	*	*	5	5		12	5
X20 00228		NUT, HEXAGON: PUMP ADAPTER MTG, 3/8-16 THD SIZE BG002B3 (88795)	EA		4										12	14
X20 00229		NUT, HEXAGON: PUMP MTG, 5/16-18 THD SIZE BG002B2 (88795)	EA		5										12	19
X20 00230		WASHER, FLAT: PUMP MTG, 5/16 IN SCREW SIZE AD001A1 (88795)	EA		1										12	18
X20 00231		WASHER, LOCK: PUMP MTG, 5/16 IN SCREW SIZE AH002B1 (88795)	EA		10										12	13
X20 00232		WASHER, LOCK: PUMP ADAPTER, 3/8 IN SCREW SIZE AH002B2 (88795)	EA		4										12	15
P F 00233	4320-989-3259	KIT, PUMP SEAL AND GASKET K214-5 (88795)	EA		1	2	2	2	2	2	2	25	25			
X1 00234	5330-924-0050	GASKET, CASING B1004A1 (88795)	EA		1										12	10
X1 00235		SEAL, SHAFT: 3/4 IN AE002A1 (88795)	EA		1										12	6
X1 00236	4320-946-9947	SEAT, SHAFT SEAL A6001A1 (88795)	EA		1										12	9
X1 00237	4320-920-5343	SLEEVE, SHAFT E4002A1 (88795)	EA		1										12	7
00238		7203 - VALVES, FITTINGS, NOZZLES														
P OR 00239	4320-946-9961	NOZZLE ASSEMBLY, NONAUTOMATIC SX931A (88795)	EA		2	*	*	*	*	*	*	5	5			



(1) SMR CODE INDEX NO.	(2) FEDERAL STOCK NUMBER	(3) DESCRIPTION  REFERENCE NO. & MFR. CODE  USABLE ON CODE		(4) UNIT OF ISSUE	(5) QTY INC IN UNIT PACK	(6) QTY INC IN UNIT	(7) 30-DAY DS MAINT ALLOWANCE			(8) 30-DAY GS MAINT ALLOWANCE			(9) 1-YR ALW PER 100 EQUIP CNTGCTY	(10) DEPOT MAINT ALW- PER 100 EQUIP	(11) ILLUS- TRATION		
							(a)	(b)	(c)	(a)	(b)	(c)			(a)	(b)	
							1-20	21-50	51-100	1-20	21 50	51-100			FIG NO.	ITEM NO.	
00253		7204 - MISCELLANEOUS PARTS AND ACCESSORIES															
X20 00254		GAGE ASSEMBLY, GO-NO-GO: 100 GPM SX1611 (88795)		EA		1											
X1 00255		GAGE, GO-NO-GO: 100 GPM 044107S (90005)		EA		1									14	6	
X1 00255A		CLAMP, GAGE GO-NO-GO ARO10A1 (08484)		EA		2									15	2	
X1 00256		COVER, END 100 GPM SX1613 (88795)		EA		1									15	5	
P 0 00257	4930-872-1779	ELEMENT, FILTER 041420S (90005)		EA		5	4	8	17	4	8	17	200	200	15	1	
X2F 00258		HOUSING, GAGE GO-NO-GO SX1660 (90005)		EA		1									15	3	
P 0 00259	5330-526-7517	O RING, 100 GPM GAGE MS29513-249 (96906)		EA		1	2	4	8	2	4	8	100	100	15	4	
X20 00260		ADAPTER, HOSE MAB6 (88795)		EA		2									14	8	
X20 00261	4730-805-6726	ADAPTER, HOSE: 1 1/2 IN 633F (81718)		EA		2									14	2	
X1 00262		CAP ASSEMBLY, DUST SX1604 (88795)		EA		2									14	4	
X1 00263		DUST CAP 634B (88795)		EA		2											
X1 00264		FINGER RING SX1605 (88795)		EA		4											
P 0 00265	4730-360-0595	GASKET H6430M (81718) (INITIALLY LISTED AS INDEX No. 00189)		EA		2									14	3	

(1) SMR CODE INDEX NO.	(2) FEDERAL STOCK NUMBER	(3) DESCRIPTION  REFERENCE NO. & MFR. CODE  USABLE ON CODE	(4) UNIT OF ISSUE	(5) QTY INC IN UNIT PACK	(6) QTY INC IN UNIT	(7) 30 DAY DS MAINT ALLOWANCE			(8) 30-DAY GS MAINT ALLOWANCE			(9) 1-YR ALW PER 100 EQUIP CNTGCTY	(10) DEPOT MAINT ALW- PER 100 EQUIP	(11) ILLUS- TRATION		
						(a)	(b)	(c)	(a)	(b)	(c)			(a)	(b)	
						1-20	21-50	51-100	1-20	21-50	51-100			FIG NO.	ITEM NO.	
X1 00266	4010-628-5276	CHAIN, ASSEMBLY, SINGLE H6682M (81718)	EA		2											
P 0 00267	4320-920-5342	CLAMP, HOSE QS200M28A (88795)	EA		4	*	2	2	*	2	2	20	20	14	9	
X20 00268	4730-020-9293	COUPLER: 1 1/2 IN 633H (81718)	EA		1									14	12	
X20 00269		HOSE, GAGE CONNECTING SX1619 (88795)	EA		1									14	10	
X20 00270		NIPPLE: 1 1/2, ALUM, 2 IN LG SX715 (88795)	EA		1									14	5	
P 0 00271	6685-923-7077	GAGE, PRESSURE, DIAL 022-171 (38508)	EA		2	*	*	*	*	*	*	5	5	14	7	
X20 00272		PLUG ASSEMBLY, DUST SX1617 (88795)	EA		1									14	11	
X1 00273		FINGER RING SX1605 (88795)	EA		2											
P 0 00274	4730-360-0595	GASKET H6430M (81718) (INITIALLY LISTED AS INDEX No. 00189)	EA		1									14	3	
X1 00275	4730-595-3846	PLUG, HOSE 634A (81718)	EA		1											
X1 00276	4010-628-5276	CHAIN ASSEMBLY, SINGLE H6682M (81718)	EA		1											
X20 00277		TEE, ALUM: 1 1/2, 1/2 X 1/2 SX733 (88795)	EA		1									14	1	

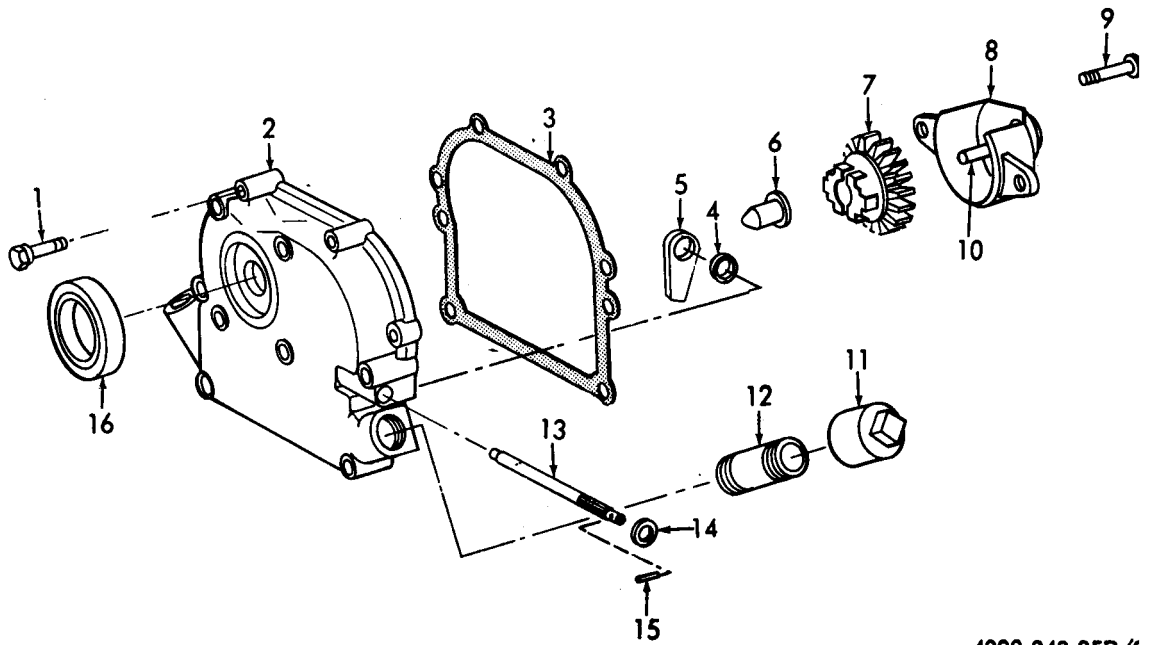


4320-248-25P/1

FIGURE NO. 1 CYLINDER, VALVES AND CAMSHAFT

LEGEND TO PARTS, FIGURE 1

ITEM NO.	FUNCT GROUP	ITEM NAME	ITEM NO.	FUNCT GROUP	ITEM NAME	ITEM NO.	FUNCT GROUP	ITEM NAME
1	0105	TAPPET	7	0100	WASHER	13	0105	PIN
2	0105	VALVE	8	0100	BOLT	14	0105	RETAINER
3	0105	VALVE	9	0101	PLUG	15	0105	ROTATOR CAP
4	0101	CYLINDER AY	10	0105	SPRING	16	0105	SPRING
5	0101	SEAL	11	0105	SEAT	17	0105	CAMSHAFT
6	0100	NUT	12	0105	PIN			



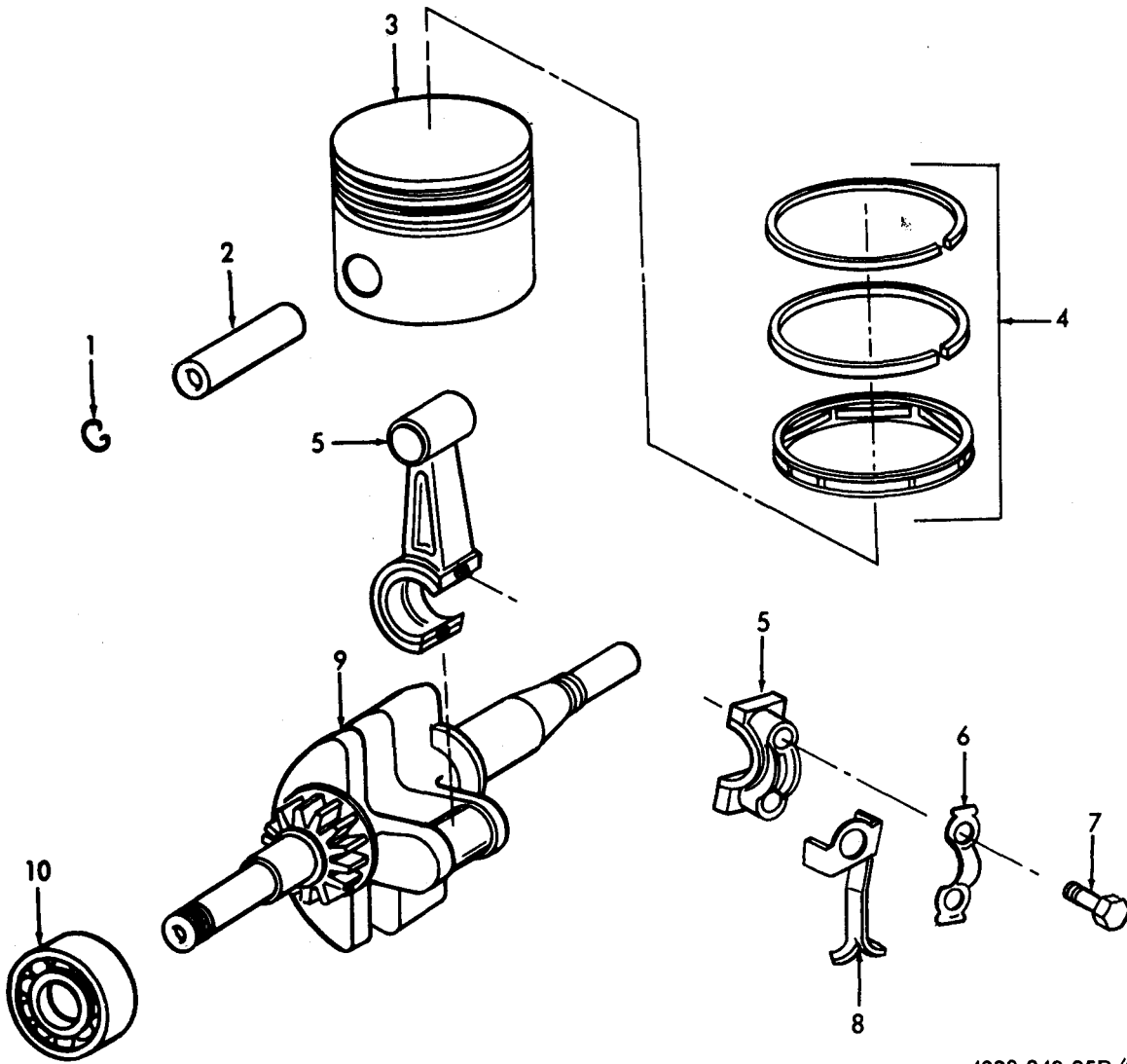
4320-248-25P/;

FIGURE No. 2 CYLINDER COVER AND GOVERNOR

LEGEND TO PARTS, FIGURE 2

ITEM NO.	FUNCT GROUP	ITEM NAME
1	0101	BOLT
2	0101	COVER
3	0101	GASKET
4	0308	WASHER
5	0308	FOLLOWER
6	0308	RETAINER
7	0308	GEAR
8	0308	BODY
9	0308	SCREW
10	0308	SHAFT
11	0106	CAP
12	0106	NEEDLE
13	0308	SHAFT
14	0308	WASHER
15	0308	PIN
16	0101	SEAL





4320-248-25P/3

FIGURE NO. 3 PISTON, CONNECTING ROD AND CRANKSHAFT

LEGEND TO PARTS, FIGURE 3

ITEM NO.	FUNCT GROUP	ITEM NAME	ITEM NO.	FUNCT GROUP	ITEM NAME
1	0104	RING	6	0104	LOCK
2	0104	PIN	7	0104	BOLT
3	0104	PISTON AY	8	0104	DI PPER
4	0104	RING SET	9	0102	CRANKSHAFT
5	0104	ROD AY	10	0102	BEARING

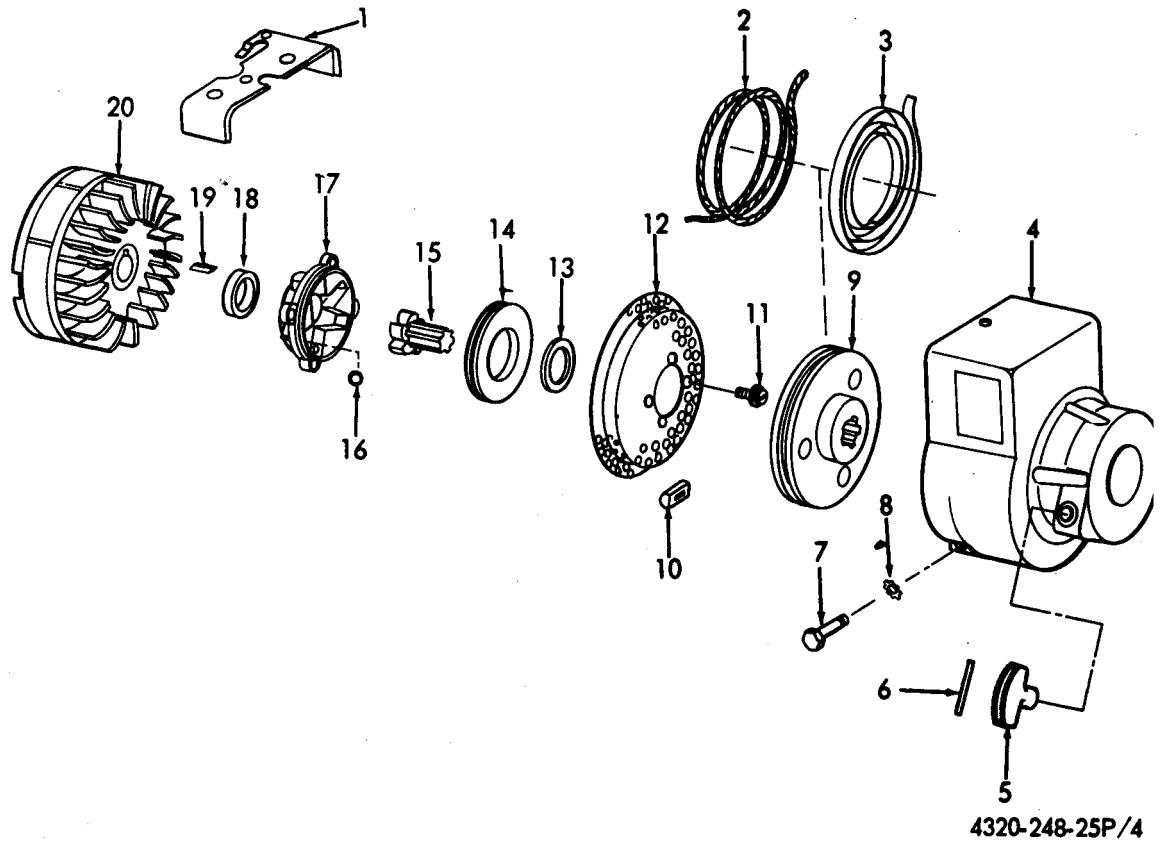
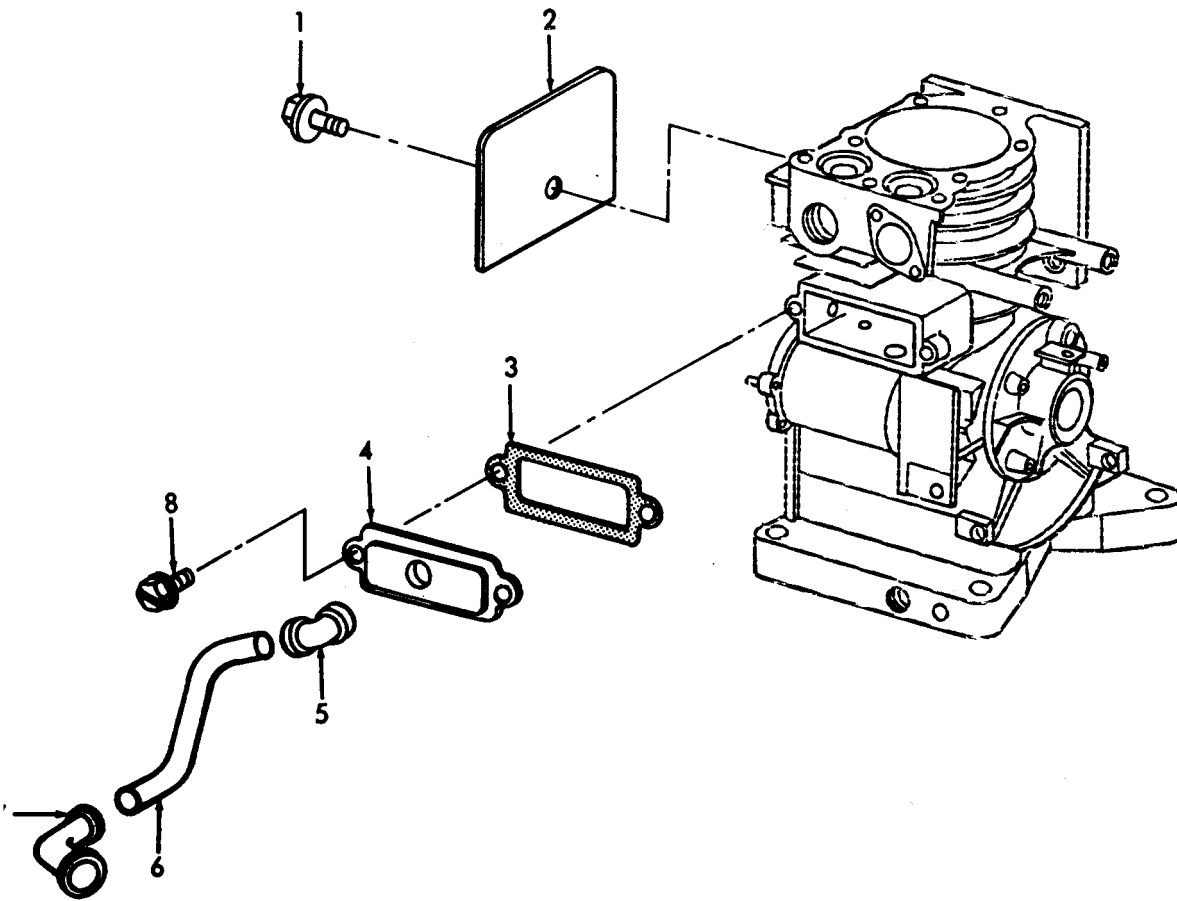


FIGURE No. 4 REWINDSTARTER, FLYWHEEL

LEGEND TO PARTS, FIGURE 4

ITEM NO.	FUNCT GROUP	ITEM NAME	ITEM NO.	FUNCT GROUP	ITEM NAME	ITEM NO.	FUNCT GROUP	ITEM NAME
1	0502	COVER	8	0502	WASHER	15	0107	RATCHET
2	0107	ROPE	9	0107	PULLEY	16	0107	BEARING
3	0107	SPRING	10	0107	BUMPER	17	0107	HOUSING
4	0502	HOUSING	11	0107	SCREW	18	0605	WASHER
5	0107	GRIP	12	0107	SCREEN	19	0605	WASHER
6	0107	PIN	13	0107	WASHER	20	0605	FLYWHEEL AY
7	0502	SCREW	14	0107	WASHER			



4320-248-25P/5

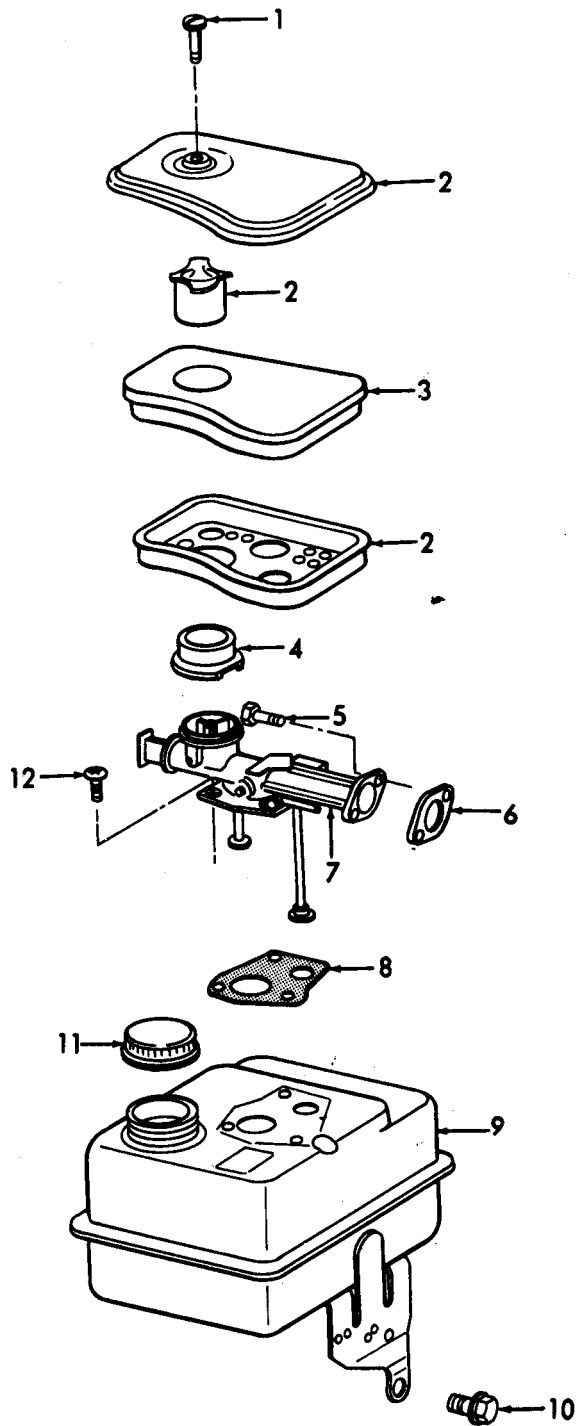
FIGURE No. 5 CRANKCASE BREATHER

LEGEND TO PARTS, FIGURE 5

ITEM NO.	FUNCT GROUP	ITEM NAME	ITEM NO.	FUNCT GROUP	ITEM NAME
1	0502	SCREW	5	0106	GROMMET
2	0502	SHIELD	6	0106	TUBE
3	0106	GASKET	7	0106	GROMMET
4	0106	BREATHER	8	0106	BOLT

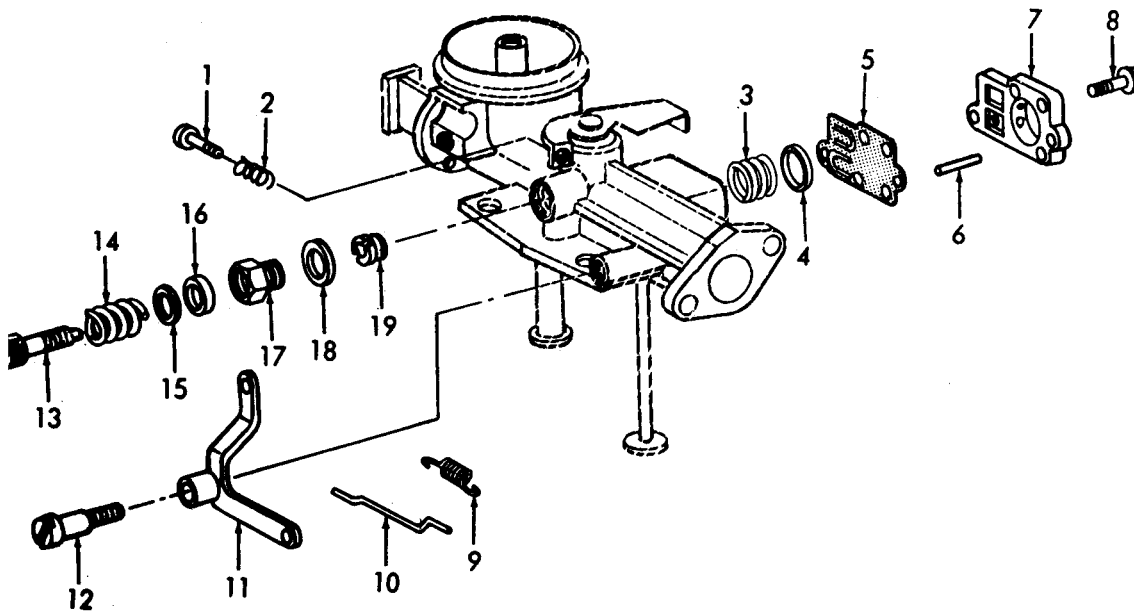
LEGEND TO PARTS, FIGURE 6

ITEM NO.	FUNCT GROUP	ITEM NAME
1	0304	SCREW
2	0304	AIR CLEANER
3	0304	FILTER ELEMENT
4	0304	GASKET
5	0301	SCREW
6	0301	GASKET
7	0301	CARBURETOR AY
8	0306	GASKET
9	0306	TANK
10	0306	SCREW
11	0306	CAP
12	0301	SCREW



4320-248-25P/6

FIGURE NO. 6 FUEL TANK, CARBURETOR AND AIR CLEANER

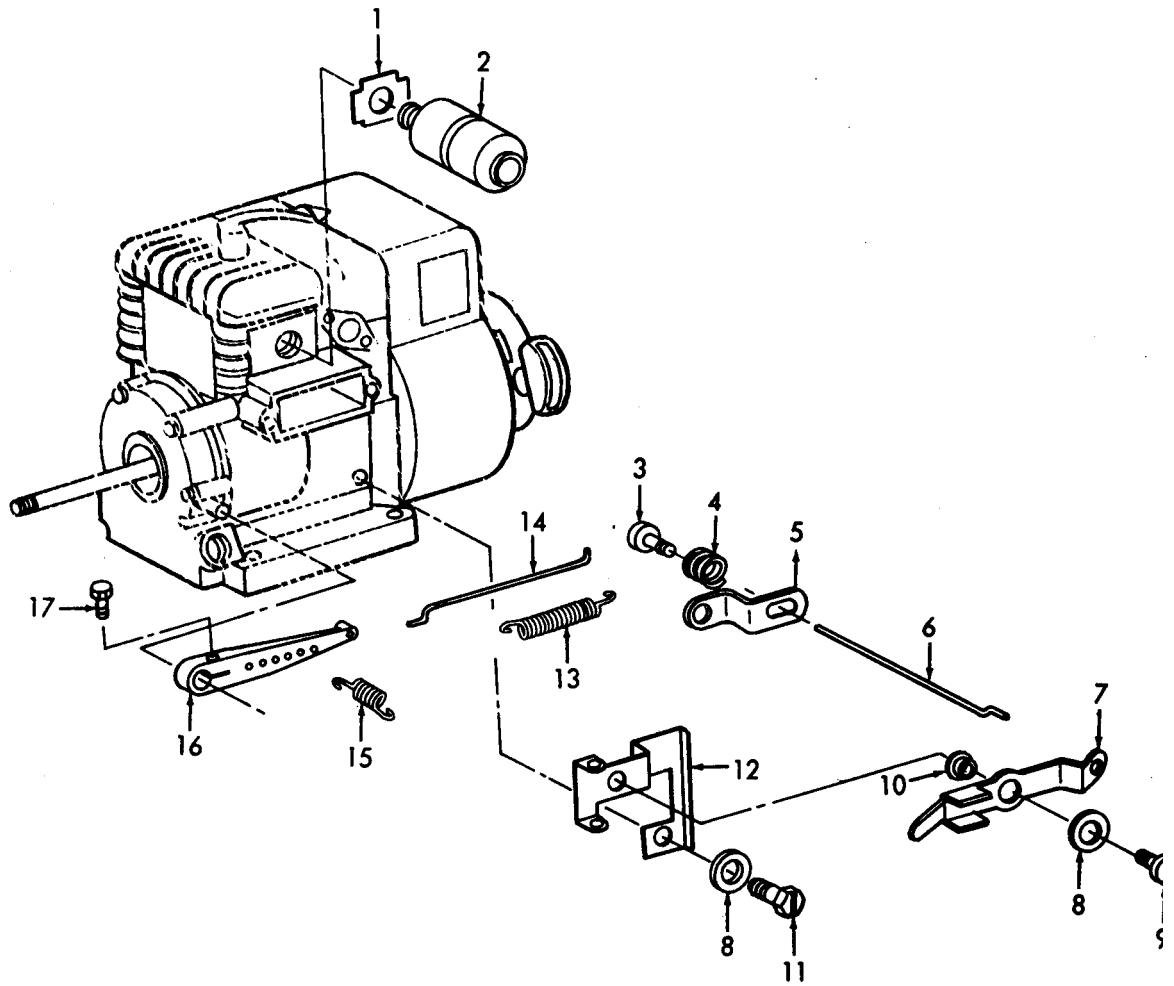


4320-248-25P/7

FIGURE NO. 7 CARBURETOR

LEGEND TO PARTS, FIGURE 7

ITEM NO.	FUNCT GROUP	ITEM NAME	ITEM NO.	FUNCT GROUP	ITEM NAME
1	0301	SCREW	11	0301	CRANK
2	0301	SPRING	12	0301	SCREW
3	0301	SPRING	13	0301	VALVE
4	0301	CAP	14	0301	SPRING
5	0301	DIAPHRAGM	15	0301	WASHER
6	0301	PIN	16	0301	PACKING
7	0301	COVER	17	0301	NUT
8	0301	SCREW	18	0301	GASKET
9	0301	SPRING	19	0301	SEAT
10	0301	LINK			

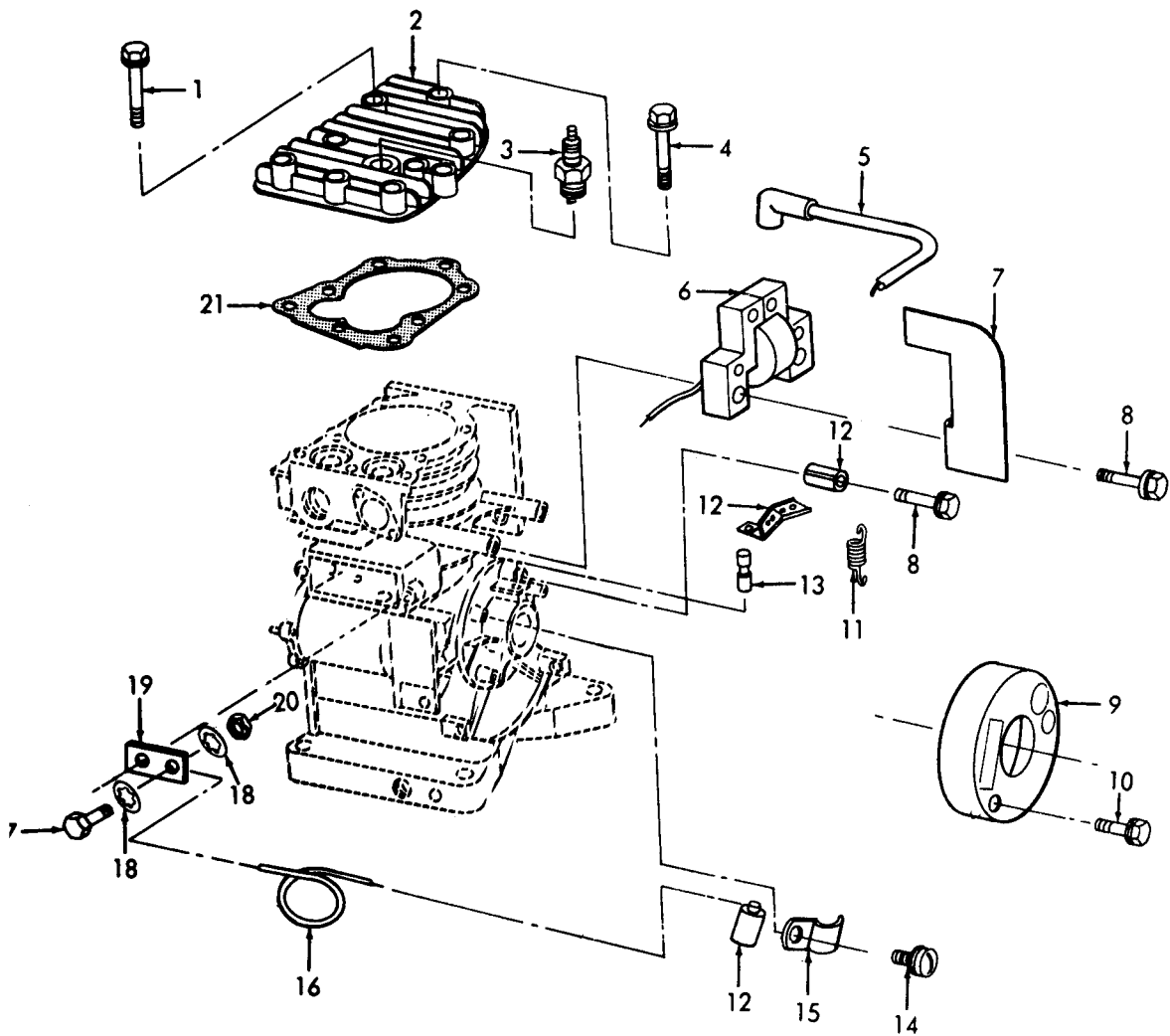


4320-248-25P/

FIGURE No. 8 MUFFLER AND GOVERNOR CONTROLS

LEGEND TO PARTS, FIGURE 8

ITEM NO.	FUNCT GROUP	ITEM NAME	ITEM NO.	FUNCT GROUP	ITEM NAME
1	0401	LOCKNUT	10	0308	BUSHING
2	0401	MUFFLER	11	0308	SCREW
3	0308	NUT	12	0308	BRACKET
4	0308	SPRING	13	0308	SPRING
5	0308	BRACKET	14	0308	LINK
6	0308	ROD	15	0308	SPRING
7	0308	LEVER	16	0308	LEVER
8	0308	WASHER	17	0308	SCREW
9	0308	SCREW			

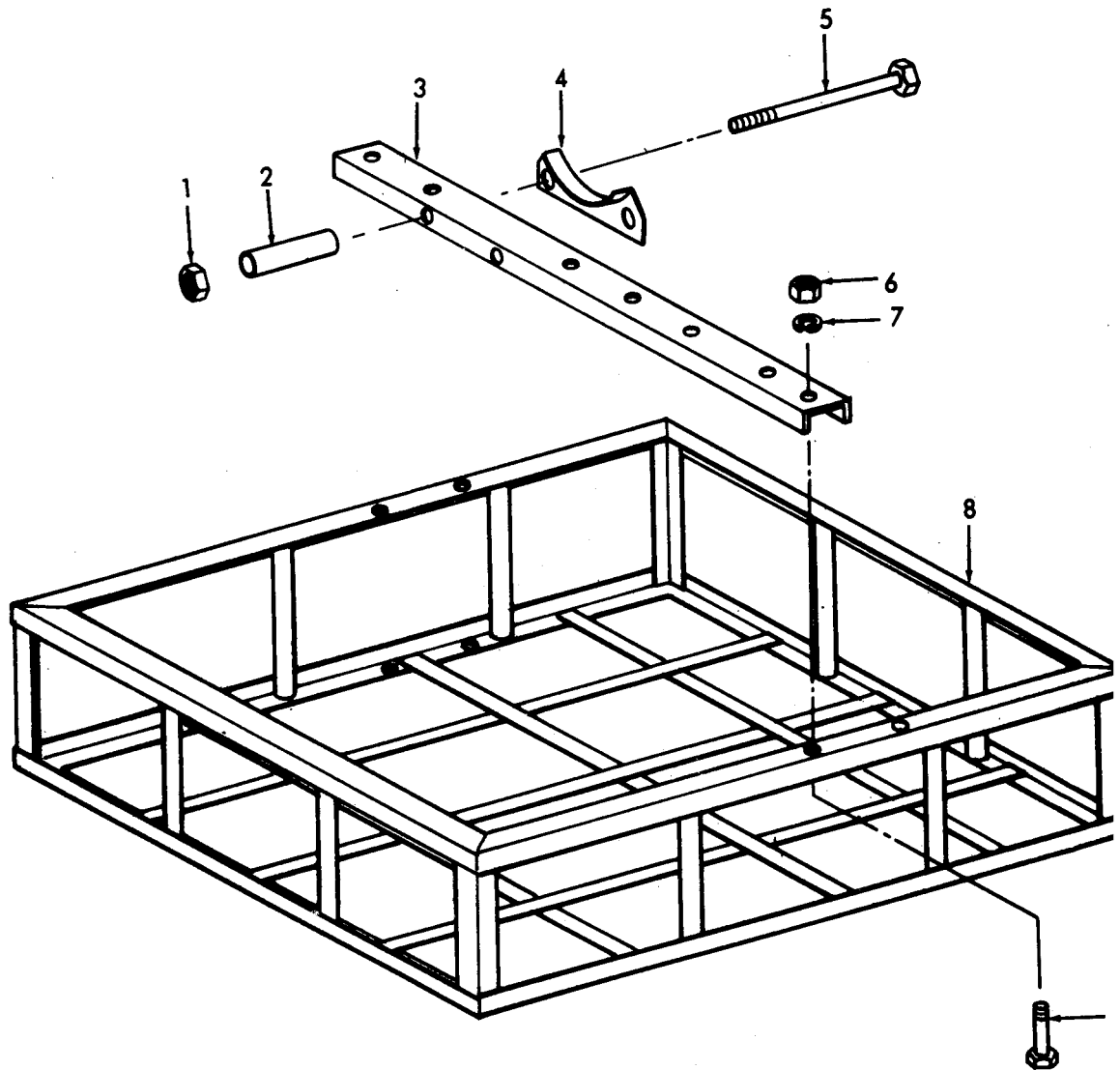


4320-248-25P/9

FIGURE NO. 9 CYLINDER HEAD AND IGNITION COMPONENTS

LEGEND TO PARTS, FIGURE 9

ITEM NO.	FUNCT GROUP	ITEM NAME	ITEM NO.	FUNCT GROUP	ITEM NAME	ITEM NO.	FUNCT GROUP	ITEM NAME
0101	BOLT		8	0605	SCREW	15	0605	CLAMP
0101	HEAD		9	0605	COVER	16	0605	WIRE
0605	PLUG		10	0605	SCREW	17	0605	BOLT
0101	BOLT		11	0605	SPRING	18	0605	WASHER
0605	LEAD		12	0605	PARTS KIT	19	0605	INSULATOR
0605	ARMATURE		13	0605	PLUNGER	20	0605	NUT
0502	DEFLECTOR		14	0605	SCREW	21	0101	GASKET



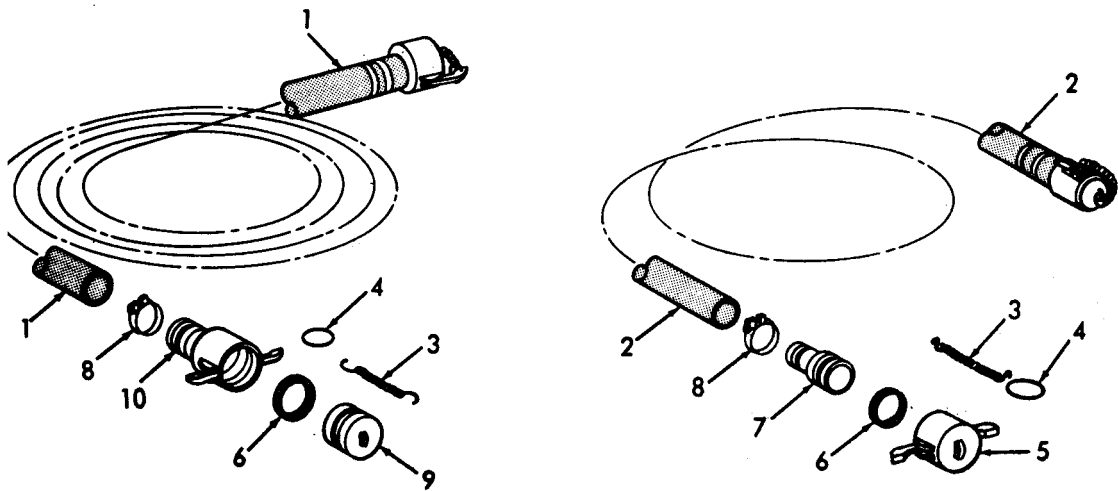
4320-248-25P/10

FIGURE NO. 10 BASKET AND FRAME

LEGEND TO PARTS, FIGURE 10

ITEM NO.	FUNCT GROUP	ITEM NAME	ITEM NO.	FUNCT GROUP	ITEM NAME	ITEM NO.	FUNCT GROUP	ITEM NAME
1	1501	NUT	4	1501	SUPPORT	7	1501	WASHER
2	1501	SPACER	5	1501	BOLT	8	1501	BASKET
3	1501	BASE	6	1501	NUT	9	1501	BOLT



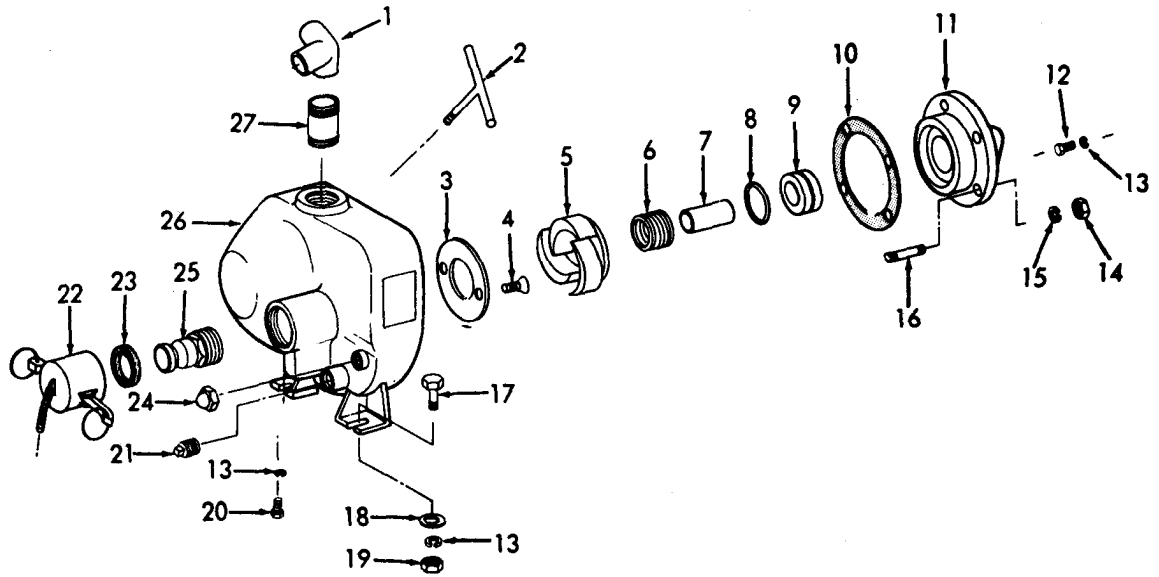


4320-248-25P/11

Figure No. 11 HOSE

LEGEND TO PARTS, FIGURE 11

ITEM NO.	FUNCT GROUP	ITEM NAME
1	2202	HOSE
2	2202	HOSE
3	2202	CHAIN AY
4	2202	RI NG
5	2202	CAP
6	2202	GASKET
7	2202	COUPLI NG
8	2202	CLAMP
9	2202	PLUG
10	2202	COUPLI NG

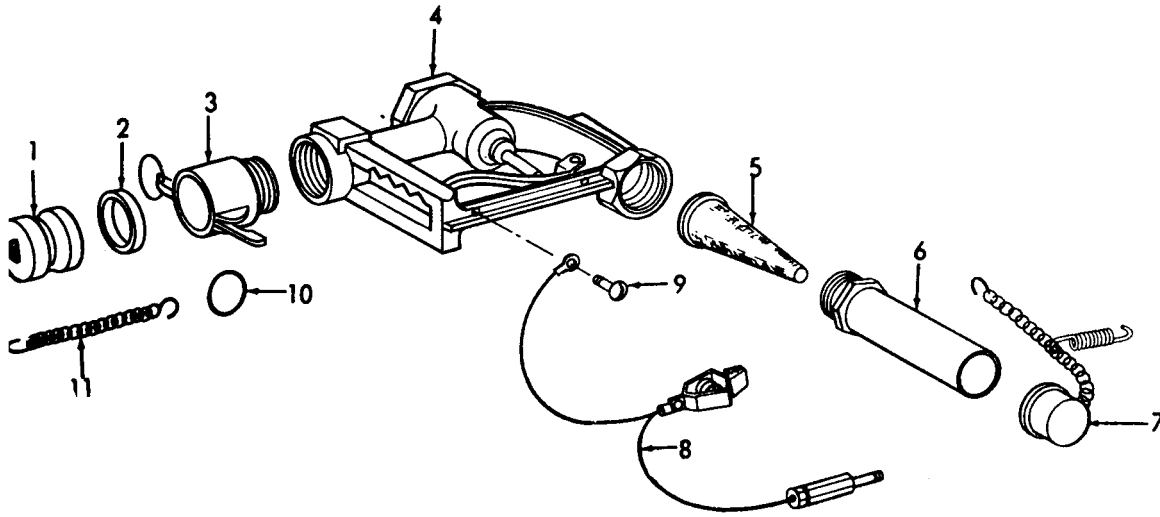


4320-248-25P/1

FIGURE NO. 12 PUMP

LEGEND TO PARTS, FIGURE 12

ITEM NO.	FUNCT GROUP	ITEM NAME	ITEM NO.	FUNCT GROUP	ITEM NAME	ITEM NO.	FUNCT GROUP	ITEM NAME
1	7202	ELBOW	10	7202	GASKET	19	7202	NUT
2	7202	HANDLE	11	7202	ADAPTER	20	7202	BOLT
3	7202	PLATE	12	7202	BOLT	21	7202	PLUG
4	7202	BOLT	13	7202	WASHER	22	7202	CAP AY
5	7202	IMPELLER	14	7202	NUT	23	7202	GASKET
6	7202	SEAL	15	7202	WASHER	24	7202	NUT
7	7202	SLEEVE	16	7202	STUD	25	7202	COUPLING
8	7202	O RING	17	7202	BOLT	26	7202	CASING
9	7202	SEAT	18	7202	WASHER	27	7202	NI PPLE

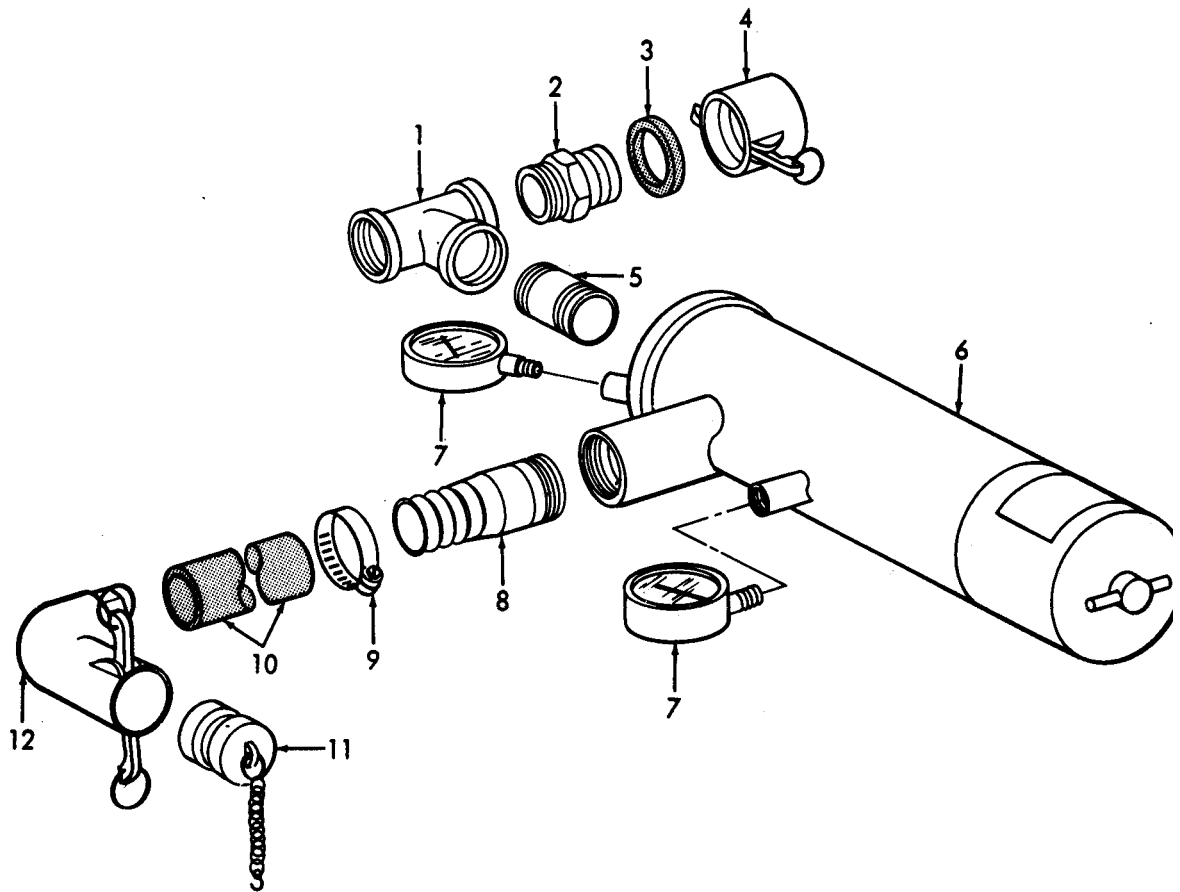


4320-248-25P/13

FIGURE NO. 13 NOZZLE

LEGEND TO PARTS, FIGURE 13

ITEM NO.	FUNCT GROUP	ITEM NAME
1	7203	PLUG
2	7203	GASKET
3	7203	COUPLER
4	7203	NOZZLE
5	7203	SCREEN
6	7203	SPOUT
7	7203	CAP AY
8	7203	WIRE AY
9	7203	SCREW
10	7203	RING
11	7203	CHAIN

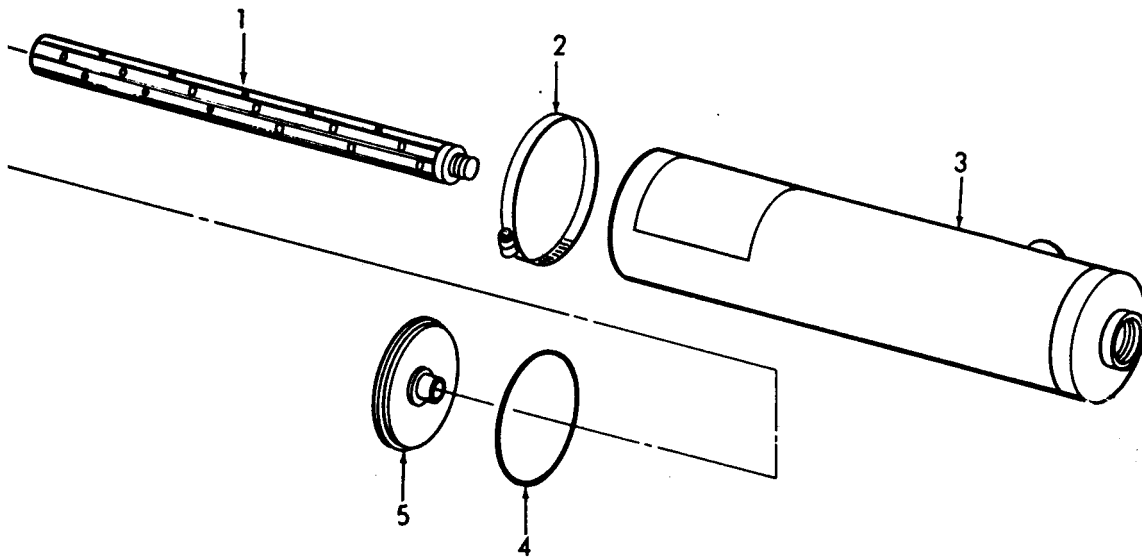


4320-248-25P/14

FIGURE NO. 14 MONITOR

LEGEND TO PARTS, FIGURE 14

ITEM NO.	FUNCT GROUP	ITEM NAME	ITEM NO.	FUNCT GROUP	ITEM NAME
1	7204	TEE	7	7204	GAGE
2	7204	ADAPTER	8	7204	ADAPTER
3	7204	GASKET	9	7204	CLAMP
4	7204	CAP AY	10	7204	NOSE
5	7204	NIPPLE	11	7204	PLUG AY
6	7204	GAGE	12	7204	COUPLER



4320-248-25P/15

FIGURE NO. 15 GAGE Go- No - Go

LEGEND TO PARTS, FIGURE 15

ITEM NO.	FUNCT GROUP	ITEM NAME
1	7204	ELEMENT
2	7204	CLAMP
3	7204	HOUSING
4	7204	O Ri ng
5	7204	COVER

Section VII. INDEX-FEDERAL STOCK NUMBER AND REFERENCE NUMBER  
CROSS-REFERENCE TO INDEX NUMBER

<u>STOCK NUMBER</u>	<u>INDEX NUMBER</u>	<u>STOCK NUMBER</u>	<u>INDEX NUMBER</u>
2805-018-5293	00048	4010-628-5276	00209
2805-254-1370	00044		00266
2805-342-7432	00042		00276
2805-351-6692	00020	4320-920-5342	00267
2805-353-7587	00041	4320-920-5343	00237
2805-353-7712	00030	4320-946-9947	00236
2805-356-1334	00043	4320-946-9948	00227
2805-422-5804	00052	4320-946-9949	00219
2805-594-1030	00023	4320-946-9961	00239
2805-608-8508	00035	4320-989-3259	00233
2805-608-8509	00032	4720-916-1883	00182
2805-624-0278	00021	4720-946-9960	00181
2805-624-0282	00051	4730-020-9293	00268
2805-624-0284	00158	4730-192-9481	00056
2805-658-3916	00017	4730-360-0595	00189
2805-678-4395	00008		00197
	00022		00211
2805-678-4421	00038		00246
2805-678-4423	00034		00274
2805-678-4425	00046	4730-360-1595	00265
2805-678-4431	00010	4730-542-4030	00193
	00053	4730-542-4031	00186
2805-678-4432	00007	4730-555-1562	00195
	00018		00208
2805-679-5779	00118	4730-595-3846	00192
2805-679-5784	00124		00247
2805-776-2282	00054		00275
2805-828-0783	00004	4730-715-1558	00241
2805-849-3141	00057	4730-805-6726	00213
2805-920-5383	00019		00261
2805-920-5384	00027	4730-950-7613	00024
2805-920-5385	00153	4930-872-1779	00257
2805-920-5387	00036	5305-010-0752	00150
2805-920-5388	00047	5305-543-5220	00164
2805-949-0543	00029	5305-719-4603	00144
2805-992-0403	00045		00069
2805-999-5238	00003		00163
2910-707-7503	00107	5305-719-4783	00129
2910-711-5609	00130	5305-753-4269	00127
2910-893-5072	00082	5305-992-0440	00162
2910-893-5073	00088	5306-073-8255	00050
2910-898-2094	00108	5306-543-5219	00128
2910-898094	00009	5306-817-0730	00033
2910-920-5361	00074	5310-011-5544	00166
2910-920-5363	00087	5310-353-7577	00135
2910-920-5368	00078	5310-596-5224	00157
2910-920-5369	00075	5310-721-4667	00165
2910-920-5370	00076	5315-248-0052	00040
2910-920-5371	00080	5315-276-4081	00039
2910-949-2135	00083	5315-598-5970	00155
2920-213-1147	00156	5315-626-1789	00123
2920-294-3747	00160	5315-855-4336	00064
2920-356-1333	00161	5315-924-0051	00085
2920-537-1365	00152	5330-250-0238	00223
2920-920-5373	00149	5330-526-7517	00259
2930-537-1360	00142	5330-924-0049	00084
2930-537-1363	00141	5330-924-0050	00234
2930-537-1364	00202	5330-924-0090	00079
2940-171-7935	00006	5340-286-4566	00159
	00094	5340-356-1325	00031
2940-294-1599	00101	5340-531-7989	00240
2940-608-8514	00005	5340-923-7050	00090
	00103	5340-923-9875	00089
2940-688-7912	00102	5340-945-0493	00132
2990-174-5255	00067	5840-787-6662	00061
2990-269-7145	00139	5970-789-1925	00154
2990-624-0260	00131	5975-152-1075	00138
2990-678-1220	00136	6150-624-0279	00167
2990-768-0723	00062	6685-923-7077	00271
2990-769-4104	00070		
2990-786-2030	00065		
2990-787-6665	00116		
2990-898-2097	00133		
2990-907-0644	00059		
2990-920-5347	00121		
2990-930-1737	00066		
2990-930-1738	00068		
2990-992-0405	00111		
3110-100-6180	00060		
3110-144-9004	00026		
4010-628-5276	00191		
	00100		

Section VII. INDEX - FEDERAL STOCK NUMBER AND REFERENCE NUMBER  
CROSS-REFERENCE TO INDEX NUMBER

<u>REFERENCE No.</u>	<u>MFA CODE</u>	<u>INDEX No.</u>	<u>REFERENCE No.</u>	<u>MFA CODE</u>	<u>INDEX No.</u>
A0001A1	88795	00230	SX888	81718	00245
AE002A1	88795	00235	SX931A	88795	00239
AH002B1	88795	00012	SX937	88795	00182
		00178	SX988	88795	00176
		0231	SX989	88795	00175
AH002B2	88795	00232	SX990	88795	00214
AJ002A4	88795	00218	022-171	38508	00271
AR005A1	08484	00185	0414205	90005	00257
AR010A1	08484	00255	0441075	90005	00255
A6001A1	88795	00236	153	81718	00249
A7004A1	88795	00227	190W	81718	00252
B0001A1	88795	00220	210	81718	00242
BE002A7	88795	00172	210226	08645	00113
BE001A3	88795	00225	210227	08645	00112
BE002A2	88795	00224	210453	08645	00038
BE002A5	88795	00226	210812	08645	00023
BE002A7	88795	00002	210959	08645	00076
BF001A1	88795	00212	211383	08645	00063
BG001A2	88795	00217	220366	08645	00152
BG002B2	88795	00011	220381	08645	00118
		00174	220478	08645	00146
		00229			00202
BG002B3	88795	00228	220581	08645	00141
BH002A	88795	00200	220670	08645	00034
B1004A1	88795	00234	220680	08645	00136
CC2961 1-2X1 5-8	81718	00251	220690	08645	00120
CJ8	08645	00160	220691	08645	00116
C2002A1	88795	00215	220692	08645	00142
C3012A1	88795	00219	220756	08645	00035
D7002A1	88795	00222	220865	08645	00165
E4002A1	88795	00237	221377	08645	00075
E9001A1	88795	00206	221384	08645	00115
G3020A2	88795	00201	221653	08645	00071
H6430M	81718	00189	221661	08645	00068
		00197	22235	08645	00093
		00211	22826	08645	00135
		00246	230126	08645	00039
		00265	230127	08645	00041
		00274	230149	08645	00122
H6682M	81718	00191	230173	08645	00046
		00196	230177	08645	00124
		00209	230181	08645	00130
		00244	230228	08645	00064
		00266	230445	08645	00114
		00276	230590	08645	00083
K214-5	88795	00233	230591	08645	00087
MA86	88795	00260	230634	08645	00057
MS29513-216	96906	00223	230671	08645	00096
MS29513-249	96906	00259	230680	08645	00125
QS200M28A	88795	00267	23184	08645	00043
SX1048	88795	00250	23187	08645	00040
SX1077	88795	00180	23433	08645	00082
SX1091	88795	00177	23688	08645	00117
SX1094	88795	00173	26018	08645	00159
SX1603	88795	00204	260182	08645	00027
SX1604	88795	00194	26026	08645	00031
		00207	260455	08645	00090
		00262			00151
SX1605	88795	00188	260544	08645	00121
		00198	260545	08645	00132
		00210	260552	08645	00045
		00248	260563	08645	00081
		00264	260564	08645	00091
		00273	260575	08645	00092
SX1608	88795	00205	260585	08645	00133
SX1609	88795	00221	26336	08645	00089
SX1610	88795	00169	26478	08645	00044
SX1611	88795	00254	26855	08645	00131
SX1613	88795	00256	270026	08645	00078
SX1616	81718	00187	27402	08645	00094
SX1617	88795	00190	27549	08645	00010
		00243			00053
		00272	27586	08645	00007
SX1619	88795	00269			00018
SX1644A	88795	00170	27660	08645	00005
SX1644B	88795	0170A			00103
SX1660	90005	00258	27670	08645	00008
SX700	88795	00171			00022
SX715	88795	00216	27911	08645	00009
		00270			00108
SX733	88795	00277	27987	08645	00102
SX848	88795	00181	291925	08645	00030

<u>REFERENCE No.</u>	<u>MFG CODE</u>	<u>INDEX No.</u>	<u>REFERENCE No.</u>	<u>Mfg Code</u>	<u>INDEX No</u>
292259	08645	00042	93113	08645	0001
293141	08645	00156	93141	08645	0005
293270	08645	00107	93265	08645	0008
293740	08645	00021	93322	08645	0010
293999	08645	00167	93341	08645	0005
294077	08645	00119	93343	08645	0010
294088	08645	00065	93357	08645	0005
294178	08645	00051	93381	08645	0016
294260	08645	00143	93392	08645	0005
294303	08645	00070	93394	08645	0005
294306	08645	00017	99158	08645	0002
294367	08645	00032			
294584	08645	00067			
294628	08645	00158			
294870	08645	00101			
294932	08645	00111			
295455	08645	00029			
295657	08645	00036			
296C	81718	00240			
296178	08645	00080			
296591	08645	00106			
296610	08645	00019			
296676	08645	00047			
296677	08645	00048			
296784	08645	00074			
296811	08645	00086			
296884	08645	00153			
297069	08645	00077			
297275	08645	00004			
297961	08645	00088			
298310	08645	00059			
298436	08645	00066			
298502	08645	00149			
541-621-048	25500	0084			
546-622-048	25500	00183			
61760	08645	00155			
633B	81718	00241			
633C	81718	00186			
633E	81718	00193			
633F	81718	00213			
		00261			
633H	81718	00268			
634A	81718	00192			
		00247			
		00275			
634B	81718	00195			
		00208			
		00263			
	88795	00060			
63770	08645	00161			
65704	08645	00084			
65978	08645	00134			
66432	08645	00061			
66528	08645	00054			
66578	08645	00079			
66594	08645	00062			
66728	08645	00154			
66935	08645	00055			
67608	08645	00072			
68238	08645	00052			
69345	08645	00003			
81232	08645	00020			
89660	08645	00139			
89966	08645	00157			
90576	08645	00024			
91249	08645	00056			
91258	08645	00138			
91811	08645	00033			
92296	08645	00145			
92666	08645	00147			
92778	08645	00150			
92786	08645	00164			
93014	08645	00014			
93032	08645	00144			
93042	08645	00069			
		00163			
93043	08645	00123			
93062	08645	00126			
93064	08645	00127			
93067	08645	00128			
93100	08645	00129			
93111	08645	00015			



By Order of the Secretary of the Army:

HAROLD K. JOHNSON,  
*General, United States Army,*  
*Chief of Staff.*

Official:

KENNETH G. WICKHAM,  
*Major General, United States Army,*  
*The Adjutant General.*

To be distributed in accordance with DA Form 12-25, Section I, requirements for Organizational Maintenance, Mobility Support Equipment for Pumps, Centrifugal, Petroleum.





**TM 5-4320-248-25P FUEL SYSTEM, TRANSFER, PORTABLE, PUMP, CENTRIFUGAL, 100 GPM-1968**

**PIN: 008476-000**